



بلاسكو للصناعات البلاستيكية
PLASCO FOR PLASTIC INDUSTRIES



UPVC - CPVC
FITTINGS CATALOG

بلاسكو للصناعات البلاستيكية
PLASCO FOR PLASTIC INDUSTRIES



بلاسكو للصناعات البلاستيكية
PLASCO FOR PLASTIC INDUSTRIES

■ Index

NON-PRESSURE UNDERGROUND DRAINAGE AND SEWERAGE UPVC FITTINGS (DIN EN 1401-1)	4
NON-PRESSURE UNDERGROUND DRAINAGE AND SEWERAGE UPVC FITTINGS (DIN EN 1401-1)	7
GENERAL PROPERTIES	12
PIPE - FITTINGS TOLERANCE FOR SOLVENT CEMENT	14
THREADING DIMENSIONS ACCORDING TO ISO 7/1, BS 21, DIN 2999, EN 10226-1.	14
ASSEMBLY INSTRUCTIONS (METRIC & THREADED) SERIES	15
UPVC HIGH PRESSURE FITTINGS (ISO 727-1) (ISO 1452) (DIN 8063)	16
UPVC SCH-40 PIPES & FITTINGS (ASTM-D-2466)	29
UPVC SCH-80 PIPES & FITTINGS (ASTM-D-2467)	32
CHEMICAL RESISTANCE	35
CPVC PIPES & FITTINGS (ASTM-F-439)	37
Our Branches in Kingdom	40
Certificates	41
Notes	42

DIN EN 1401-1: NON-PRESSURE UNDERGROUND DRAINAGE AND SEWERAGE UPVC FITTINGS



DRAINAGE AND SEWERAGE UPVC FITTINGS

Elbow 87° 30`

R/J - M/F

Size (mm)

50
75
110
160
200
250
315
400
500
630



Elbow 45°

R/J - M/F

Size (mm)

50
75
110
160
200
250
315
400
500
630



Repair Coupling

R/J - F/F

Size (mm)

50
75
110
160
200
250
315
400



Register Coupling

R/J - F/F

Size (mm)

50
75
110
160
200
250
315
400
500
630



Reducer

R/J - M/F

Size (mm)

75x50
110x50
110x75
160x110
200x110
200x160
250x200
250x200
315x160
315x200
315x250
400x315



End Plug

M

Size (mm)

40
50
63
75
90
110
160
200
250
315
400



DRAINAGE AND SEWERAGE UPVC FITTINGS

Tee 87° 30`

R/J - M/F/F

Size (mm)

50
75
110
160
200
250
315
400
500
630

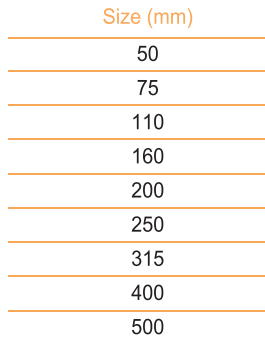


Wye 45°

R/J - M/F/F

Size (mm)

50
75
110
160
200
250
315
400
500



Tee Reducer 87° 30` R/J - M/F/F

Size (mm)

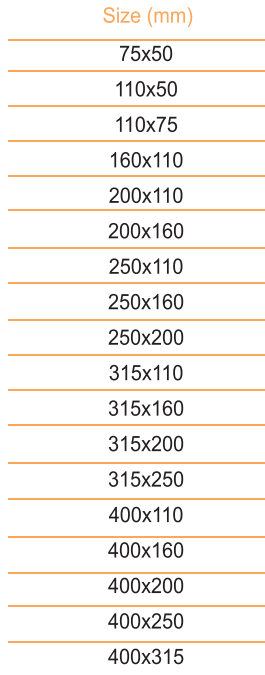
75x50
110x50
110x75
160x110
200x110
200x160
250x110
250x160
250x200
315x110
315x160
315x200
315x250
400x110
400x160
400x200
400x250
400x315



Wye Reducer 45° R/J - M/F/F

Size (mm)

75x50
110x50
110x75
160x110
200x110
200x160
250x110
250x160
250x200
315x110
315x160
315x200
315x250
400x110
400x160
400x200
400x250
400x315



Acces Cap

SC/J - F

Size (mm)

110
160
200
250
315

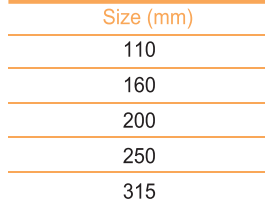


Wye Return Valve

R/J - M/F

Size (mm)

110
160
200
250
315



Floor Gully

SC/J - F

Size (mm)

110x75x50x50x50



Roof Vent

SC/J - F

Size (mm)

50
110



DIN EN 1401-1: NON-PRESSURE UNDERGROUND DRAINAGE AND SEWERAGE UPVC FITTINGS



DRAINAGE AND SEWERAGE UPVC FITTINGS

Elbow 87° 30` SC/J - M/F

Size (mm)
32
40
50
63
75
90
110
125
160
200
250
315
400



Elbow 87° 30` SC/J - F/F

Size (mm)
32
40
50
63
75
90
110
125
160
200
250
315
400



Elbow 45° SC/J - M/F

Size (mm)
32
40
50
63
75
90
110
125
160
200
250
315
400



Elbow 45° SC/J - F/F

Size (mm)
32
40
50
63
75
90
110
125
160
200
250
315
400



Cross Tee SC/J - M/F/F/F

Size (mm)
50
63
75
90
110



Wye Reducer 45° SC/J - M/F/F

Size (mm)
110x40
110x50
110x75
160x110
200x110
200x160
250x160



DRAINAGE AND SEWERAGE UPVC FITTINGS

Coupling

SC/J - F/F

Size (mm)

32
40
50
63
75
90
110
160
200
250
315



Tee 87° 30`

SC/J - F/F/F

Size (mm)

32
40
50
63
75
90
110
200
250
315



Access Cap

SC/J - F

Size (mm)

110
160
200
250
315



Tee Reducer 87° 30`

SC/J - M/F/F

Size (mm)

75x50
110x50
110x63
110x75
110x90
160x110
200x110
200x160



Tee 87° 30`

SC/J - M/F/F

Size (mm)

32
50
63
75
90
110
160
200
250
315



Double Wye 45° SC/J - M/F/F/F

Size (mm)

32
40
50
63
75
90
110
160



DRAINAGE AND SEWERAGE UPVC FITTINGS

Reducer

SC/J - M/F

Size (mm)

50x32
50x40
63x40
63x50
75x50
75x63
90x63
90x75
110x50
110x63
110x75
110x90
160x110
200x110
200x160
250x110
250x160
250x200
315x160
315x200
315x250



End Plug

SC/J - M

Size (mm)

40
50
63
75
90
110
160
200
250
315
400



Roof Vent

SC/J - F

Size (mm)

50
110



UPVC HIGH PRESSURE FITTINGS



GENERAL PROPERTIES

USAGE

High Pressure fittings can be used in long range of applications such as irrigation, water treatment, water supply, chemical, swimming pool, food stuff industries and industrial applications.

High Pressure fittings used to joint with any uPVC pipe has the same size. The uPVC compound used is fit for contact with alimentary fluids in accordance with regulations in force in U.S.A., Italy, France, Germany, Holland, UK, Scandinavian countries and Arab countries.

MATERIAL

uPVC (Unplastized Polyvinyl Chloride) compound with high quality stabilizer material (Tin) which is applicable for high pressure fitting products.

RANGE

- A very wide range of fittings is available:
- For solvent jointing metric sizes (20 mm to 400 mm).
- Adaptor fittings to connect a solvent weld uPVC piping system to pipes, fittings, valves, accessories with BSP threads.

STANDARDS

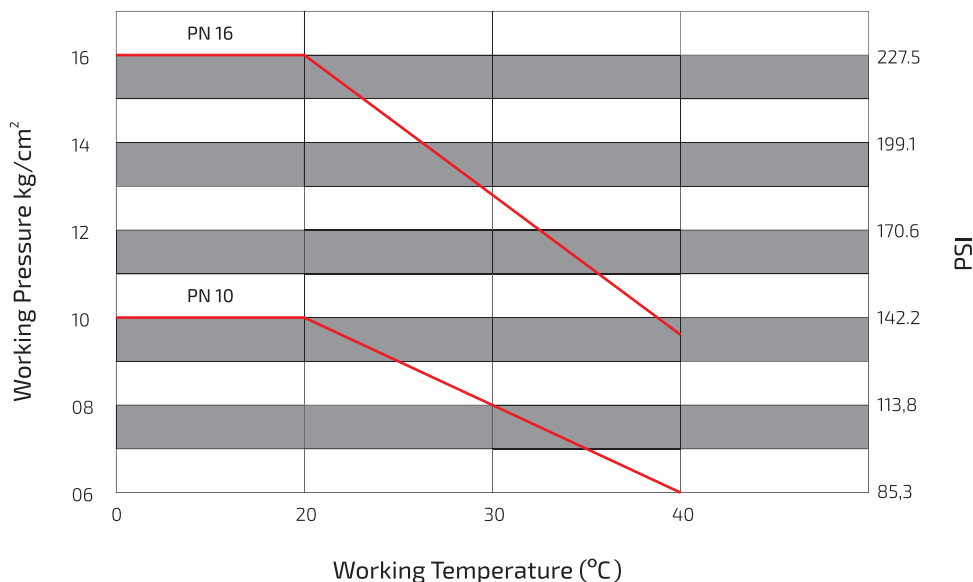
All UPVC High Pressure fittings are manufactured according to the following international standards:

- ISO 727-1
- ISO 1452
- DIN 8063

PRESSURE

The maximum working pressure decrease by a linear way with the increase of temperature

Pressure - Temperature Relationship



GENERAL PROPERTIES

MECHANICAL PROPERTIES

Maximum Working Pressure in kg/cm ²		
SERIES	DIMENSIONS	PN
Solvent jointing	from D 20mm to D 160mm	16
Solvent jointing	from D 200mm to D 400mm	10
Threaded	from D 1/2" to 6"	up to 16
Adaptor Set	from D 20mm to D 160mm	up to 16

PHYSICAL PROPERTIES

Characteristics	Method	Units	uPVC
Specific Gravity @ 23 deg * C	ASTM D 792	g/cm ³	1.4 ± 0.02
Tensile Strength @ 23 deg * C Minimum	ASTM D 638	Mpa	50
Tensile Modulus Of Elasticity @ 23 deg * C	ASTM D638	Mpa	3000
Flexural Strength @ 23 deg * C	ASTM D 790	Mpa	89
Izod Impact Strength (Notched) @ 23 deg * C	ASTM D 256	J/m ft.lbs/in	53 1.0
Vicat softening point with 5 Kgs	ISO 306	°C	78
Thermal conductivity	ASTM C177	Kcal/m h °C	0.15
Coefficient of linear expansion	ASTM D696	mm/mm °C	0.8 x 10 ⁻⁴
Water absorption	ISO R527	mg/cm ²	< 4
Flammability	-	-	Self extinguishing



UPVC PIPE-FITTINGS TOLERANCE FOR SOLVENT CEMENT ACCORDING TO:

- Fittings** - ISO 727-1, ISO 1452, DIN 8063
Pipes - ISO 161, ISO 1452, DIN 8062

Nominal Diameter DN	D (mm)	Mean outside diameter of pipes (mm)		Mean inside diameter of fittings (mm)	
		Min	Max	Min	Max
15	20	20	20,20	20,10	20,30
20	25	25	25,20	25,10	25,30
25	32	32	32,20	32,10	32,30
32	40	40	40,20	40,10	40,30
40	50	50	50,20	50,10	50,30
50	63	63	63,30	63,10	63,30
65	75	75	75,30	75,10	75,30
80	90	90	90,30	90,10	90,30
100	110	110	110,40	110,10	110,40
110	125	125	125,40	125,10	125,40
125	140	140	140,50	140,20	140,50
150	160	160	160,50	160,20	160,50
175	200	200	200,60	200,20	200,60
200	225	225	225,70	225,30	225,70
225	250	250	250,80	250,30	250,80
280	315	315	316,00	315,40	316,00
315	400	400	401,20	400,50	401,50

*Available upon request.

THREADING DIMENSIONS ACCORDING TO: ISO 7/1, BS 21, DIN 2999, EN 10226-1.

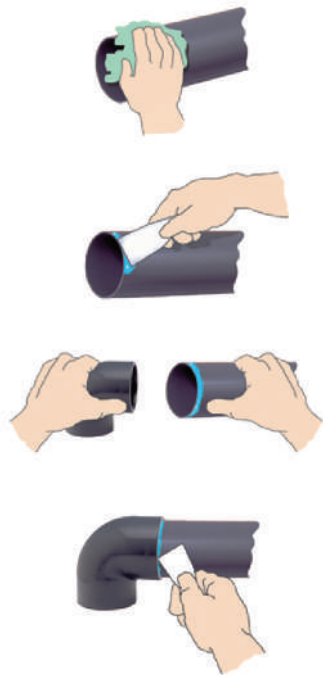
Nominal Diameter DN	Diameter of screw (mm)	Pitch		Depth of Thread (mm)	Length of Thread assembling (mm)
		N° of threads/1"	mm		
1/2"	20,95	14	1,814	1,162	15,0
3/4"	26,44	14	1,814	1,162	16,3
1"	33,25	11	2,309	1,479	19,1
1 1/4"	41,91	11	2,309	1,479	21,4
1 1/2"	47,80	11	2,309	1,479	21,4
2"	59,61	11	2,309	1,479	25,7
2 1/2"	75,18	11	2,309	1,479	30,2
3"	87,88	11	2,309	1,479	33,3
4"	113,03	11	2,309	1,479	39,2
6"	163,83	11	2,309	1,479	43,6

ASSEMBLY INSTRUCTIONS

Metric Series

Fittings rigid PVC of metric series can be glued to each other and on tubes in the same material provided that the sizes and tolerances are in accordance with the standardization and tolerances.

A strong, dense-type glue is recommended, especially for coupling large diameters, where the clearance may be tight due to the ovalization effect; such clearance anyhow, in order to guarantee a perfect seal, should never exceed 0.6 mm with a dense-type glue and 0.3 mm with a fluid-type glue.



- In order to obtain a perfect gluing, it is recommended that the glue manufacturer's instruction be strictly followed:
- Remove all traces of grease, oil or simply dust from both the tube (properly cut at 90° and beveled at the tip) and the fittings by means of a clean cloth soaked in diluent.
- Apply, by a suitable brush, a uniform layer of glue, both to the fitting and to the tube, so as to cover the entire surface to be glued.
- Immediately (in 1 to 2 minutes) insert the part to be glued in the female keying of the fitting.
- It is recommended that all glue in excess, which is not held by the coupling, be quickly removed.

It is also recommended that freshly glued parts should not be submitted to mechanical stresses. The glue manufacturer instructions concerning how long to wait before handling, and concerning sticking and pressure testing the system should be carefully followed.

Generally speaking, none of these operations should take place in the 24 hours following the gluing.

Threaded Series

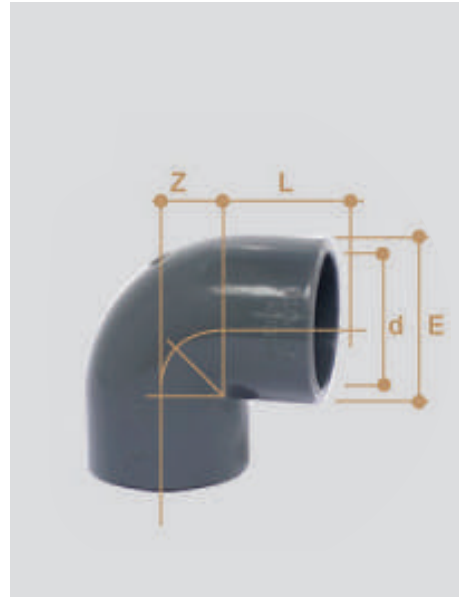
Fittings in rigid PVC of the threaded series or of the adaptor series can be screwed to each other or to tubes and other threaded parts in other materials in accordance with the rules given in this page. In order to obtain easy screwing and perfect seal, the use of high quality PTFE tape (plumber's tape) is recommended in a quantity sufficient to avoid clearance without causing too tight shutting.

The use of hemp, tow and lint, usually employed for metal fittings, is to be absolutely avoided. Such materials, contrary to what happens with PTFE are not rejected by coupling even when used in excess, making the female fitting expand in such a way as to cause breakages both during the assembly stage and later, during operation.

UPVC HIGH PRESSURE FITTINGS

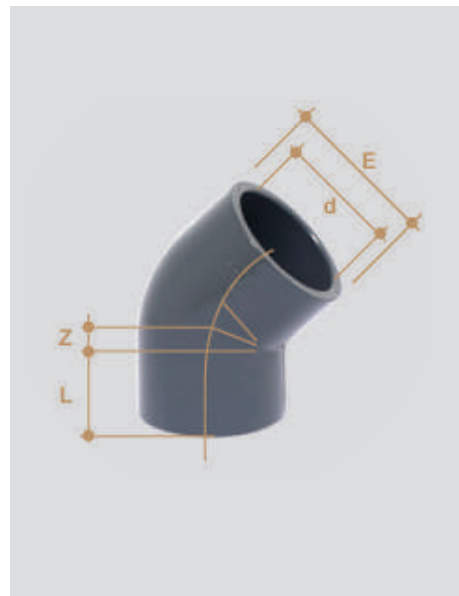
Elbow 90°

d	L	Z	E	PN
16	14	9	23.5	16
20	16	11	26.5	16
25	19	14	32.5	16
32	22	17	41	16
40	26	23	50	16
50	31	28	60	16
63	38	34	75	16
75	44	40	91	16
90	51	48	106	16
110	61	58	129	16
125	69	66	145	16
140	76	72	164	16
160	86	81	188	16
200	105	102	232	10
225	119	115	258	10
250	131.5	127.5	286	10
280	146	141	319	10
315	162	156	358	10
355	184	177	393	6
400	206	202	439	6



Elbow 45°

d	L	Z	E	PN
16	14	5.5	23.5	16
20	16	5.5	26.5	16
25	19	6	32.5	16
32	22	8	41	16
40	26	10	50	16
50	31	12	60	16
63	38	15	75	16
75	44	18	91	16
90	51	21	106	16
110	61	25	129	16
125	69	27	145	16
140	76	32	164	16
160	86	36	188	16
200	105	43	232	10
225	119	50	258	10
250	131.5	58	286	10
280	146	62	319	10
315	162	66	358	10
355	184	77	393	6
400	206	83	439	6



UPVC HIGH PRESSURE FITTINGS

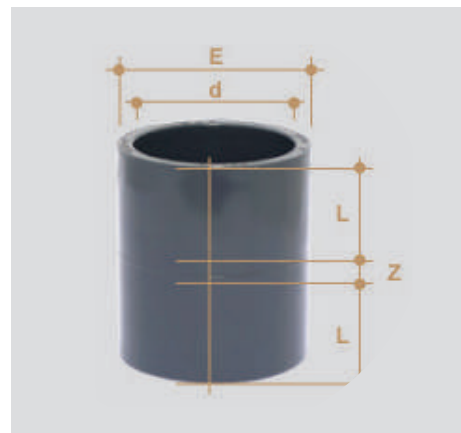
Socket

d	L	Z	E	PN
16	14	3	23.5	16
20	16	3	28	16
25	19	3	34	16
32	22	3	42	16
40	26	3	51	16
50	31	3	61	16
63	38	3	75	16
75	44	4	90	16
90	51	5	108	16
110	61	6	131	16
125	69	7	145	16
140	76	8	161	16
160	86	8	186	16
200	105	11	226	10
225	119	11	258	10
250	131.5	10	287	10
280	146	10	320	10
315	162	12	355	10
355	184	11	386	6
400	206	12	432	6



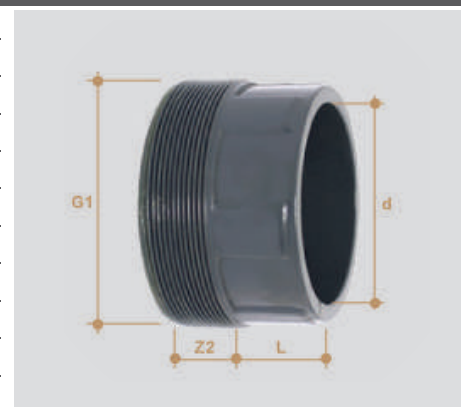
Double Socket Adaptor Plain mm/inch

d x d1	L1	L2	Z	E	E1	PN
20 x 1/2	16	16	3	28	28	16
25 x 3/4	19	19	3	33	33	16
32 x 1	22	22	3	41	41	16
40 x 1 1/4	26	26	3	50	50	16
50 x 1 1/2	31	31	3	60.5	60.5	16
63 x 2	38	38	3	75	75	16
75 x 2 1/2	44	44	4	88	88	16
90 x 3	51	51	5	106	106	16
110 x 4	61	61	6	129	129	16
160 x 6	86	90	8	181	189	16



Union Bush

d	L	Z1	Z2	G1
16	14	3	10	3/4"
20	16	3	10	1"
25	19	3	10	1 1/4"
32	22	3	10	1 1/2"
40	26	3	12	2"
50	31	3	14	2 1/4"
63	38	3	18	2 3/4"
75	44	3	18	3 1/2"
90	51	5	18	4
110	61	5	18	5



UPVC HIGH PRESSURE FITTINGS

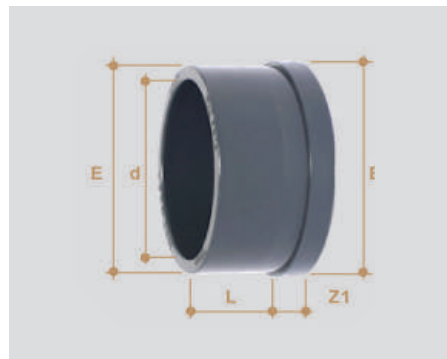
Union with o- Ring

d	L	Z1	Z2	G1	E	O-RING	PN
16	14	3	10	3/4"	34	3062	16
20	16	3	10	1"	42	4081	16
25	19	3	10	1 1/4"	52	4112	16
32	22	3	10	1 1/2"	59	4131	16
40	26	3	12	2"	72	6162	16
50	31	3	14	2 1/4"	79	6187	16
63	38	3	18	2 3/4"	96	6237	16
75	44	3	18	3 1/2"	119	6312	16
90	51	5	18	4"	134	6362	16
110	61	5	18	5"	163	6450	16



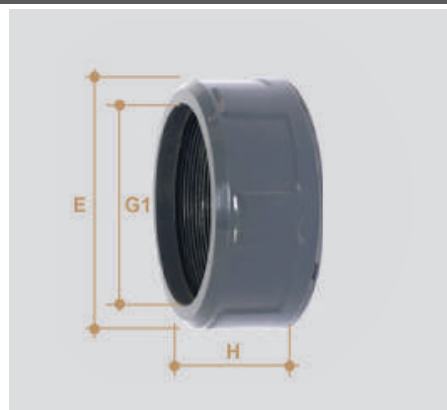
Union End

d	L	Z1	E	E1
16	14	3	22	24
20	16	3	27.5	30
25	19	3	36	39
32	22	3	41.5	44.5
40	26	3	53	56.5
50	31	3	59	62.5
63	38	3	74	78.5
75	44	3	92.5	97
90	51	5	105	110
110	61	5	129	135.5



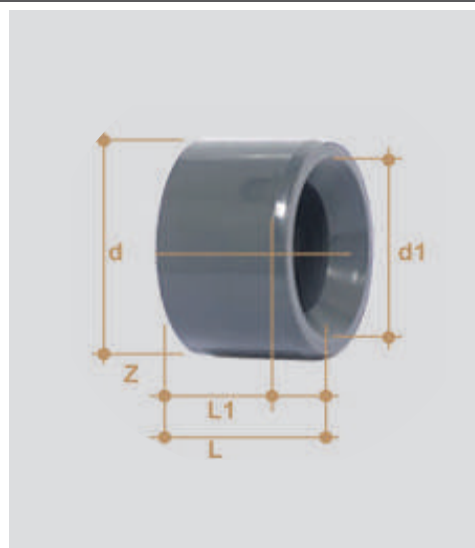
Nut for Union

d	H	G1	E	G1
16	21	21	34	3/4"
20	23	23	43	1"
25	25	25	53	1 1/4"
32	27	27	60	1 1/2"
40	30	30	73	2"
50	34	34	80	2 1/4"
63	38	38	98	2 3/4"
75	45	45	120	3 1/2"
90	52	52	134	4"
110	60	60	163	5"



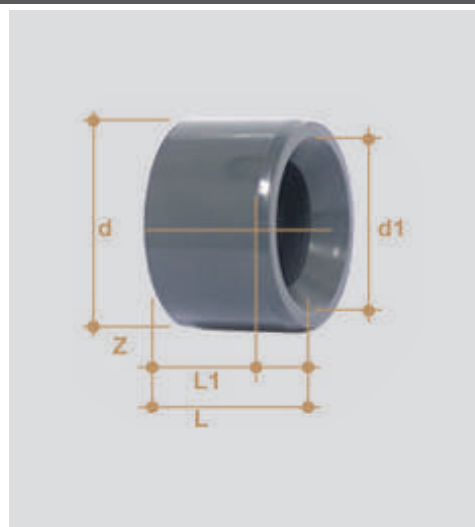
Reducing Bush

d x d1	L	L1	Z	PN
25x20	19	16	3	16
32x20	22	16	6	16
32x25	22	19	3	16
40x20	26	16	10	16
40x25	26	19	7	16
40x32	26	22	4	16
50x20	31	19	12	16
50x32	31	22	9	16
50x40	31	26	5	16
63x25	38	19	19	16
63x32	38	22	16	16
63x40	38	26	12	16
63x50	38	31	7	16
75x32	44	22	22	16
75x40	44	26	18	16
75x50	44	31	13	16
75x63	44	38	6	16
90x50	51	31	20	16
90x63	51	38	13	16
90x75	51	44	7	16
110x63	61	38	23	16
110x75	61	44	17	16
110x90	61	51	10	16



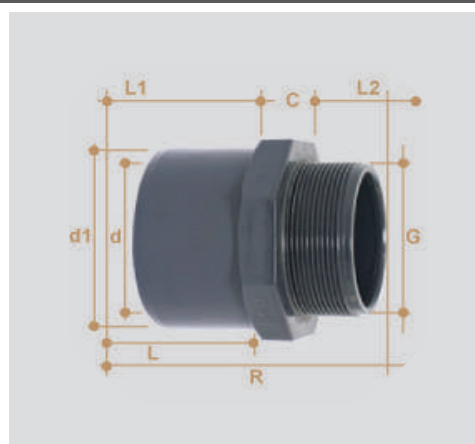
Reducing Bush

d x d1	L	L1	Z	PN
125x75	69	44	25	16
125x90	69	51	18	16
125x110	69	61	8	16
140x90	76	51	25	16
140x110	76	61	15	16
140x125	76	69	7	16
160x90	86	51	25	16
160x110	86	61	25	16
160x125	86	69	17	16
160x140	86	76	10	16
200x160	106	86	20	10
225x160	119	86	33	10
225x200	119	106	13	10
250x160	134	87	47	10
250x200	134	107	27	10
250x225	132	120	12	10
280x225	147	120	27	10
280x250	147	132	15	10
315x200	165	107	58	10
315x225	165	132	33	10
315x250	165	132	33	10
315x280	165	149	16	10



Adaptor with male threaded

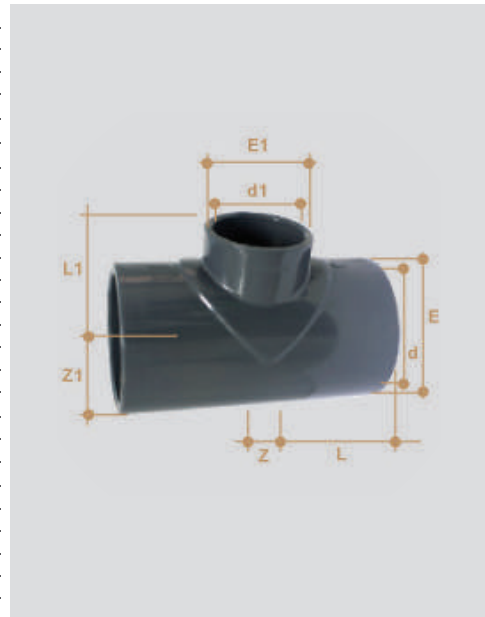
d x G	L	L1	L2	H	C	PN
20/25 x 1/2"	16	19	15.0	46	27	16
20/32 x 3/4"	19	22	16.3	50	50	16
32/40 x 1"	22	26	19.1	57	57	16
40/50 x 1 1/4"	26	31	21.4	66.5	55	16
50/63 x 1 1/2"	31	38	21.4	74	65	16
63/75 x 2"	38	44	25.7	84	75	16
75/90 x 2 1/2"	44	51	30.2	99	95	16
90 x 110 x 3"	51	61	33.3	110	115	16
110/125 x 4"	61	69	39.3	120	130	16
160/180 x 6"	75	80	45	200	130	16



UPVC HIGH PRESSURE FITTINGS

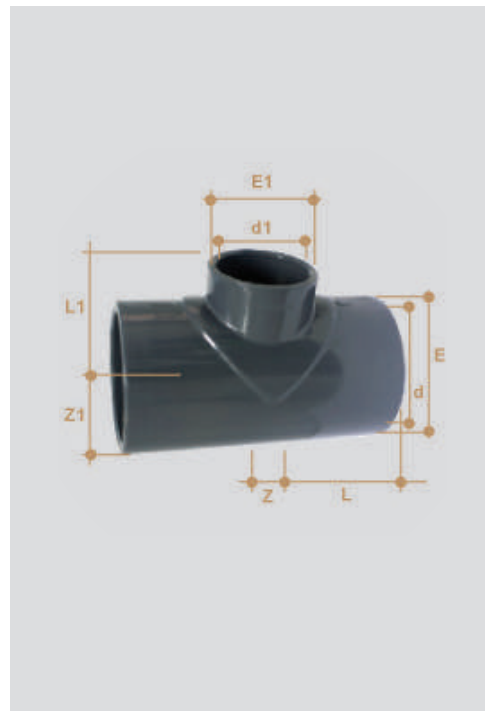
Tee Reducer

d x d1	L1	L2	Z	Z1	E	E1	PN
25x20	19	16	14	14	33.5	28	16
32x20	22	16	17	17	42	28	16
32x25	22	19	17	17	42	34	16
40x20	26	16	21	21	51	28	16
40x25	26	16	21	21	51	34	16
40x32	26	22	21	21	51	42	16
50x20	31	26	26	26	61	28	16
50x25	31	16	26	26	61	34	16
50x32	31	19	26	26	61	42	16
50x40	31	22	26	26	61	51	16
63x20	38	26	33	33	75	28	16
63x25	38	31	33	33	75	34	16
63x32	38	22	33	33	75	42	16
63x40	38	26	33	33	75	51	16
63x50	38	33	33	33	75	61	16
75x32	44	22	39	39	89	42	16
75x40	44	26	39	39	89	51	16
75x50	44	31	39	39	89	61	16
75x63	44	38	39	39	89	75	16
90x40	51	26	47	47	106	51	16
90x50	51	31	47	47	106	61	16
90x63	51	38	47	47	106	75	16
90x75	51	44	47	47	106	89	16
110x50	61	31	57	57	129	61	16
110x63	61	38	57	57	129	75	16
110x75	61	44	57	57	129	89	16



Tee Reducer

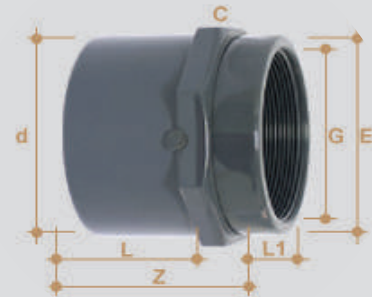
d x d1	L1	L2	Z	Z1	E	E1	PN
110x90	61	51	57	57	129	106	16
125x63	69	44	66	66	148	75	16
125x75	69	44	66	66	148	89	16
125x90	69	51	66	66	148	106	16
125x110	69	61	66	66	148	129	16
140x75	76	44	72	72	163	89	16
140x90	76	51	72	72	163	106	16
140x110	76	61	72	72	163	129	16
140x125	76	69	72	72	163	148	16
160x90	86	51	82	82	184	106	16
160x110	86	61	82	82	184	129	16
160x125	86	69	82	82	184	148	16
160x140	86	76	82	82	184	163	16
200x90	106	52	58	102	228	112	10
200x110	106	63	58	113	228	137	10
200x160	106	87	87	105	228	185	10
225x110	119.5	63	58	114	258	135	10
225x160	119.5	88	84	115	258	193	10
250x110	129	63	61	128	284	134	10
250x160	129	87	86	129	284	189	10
250x200	129	106	133	132	284	228	10
280x160	146	88	84	153	320	193	10
280x225	146	117.3	117	148.5	320	258	10
315x160	164	86	85	161	355	195	10
315x200	164	106	102	179	355	228	10
315x225	164	118.5	117	162	355	320	10
315x250	164	131	127	160	355	285	10



UPVC HIGH PRESSURE FITTINGS

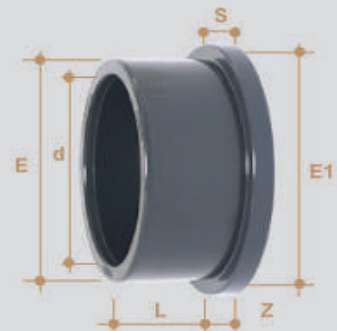
Adaptor with female threaded

d x G	L	L1	E	Z	C	PN
20 x 1/2"	16	15.0	28	24	30	16
25 x 3/4"	19	16.3	34	27	36	16
32 x 1"	22	19.1	42	30	46	16
40 x 1 1/4"	26	21.4	51	36	55	16
50 x 1 1/2"	31	21.4	58	41	60	16
63 x 2"	38	25.7	75	48	75	16
75 x 2 1/2"	44	30.2	89	58	90	16
90 x 3"	51	33.3	103	65	95	16
110 x 4"	61	39.3	130	76	130	16



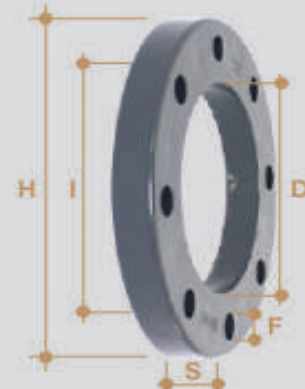
Stub

d	DN	L	z	S	E	E1	PN
25	20	19	3	7	41	41	16
32	25	22	3	7	50	50	16
40	32	26	3	8	61	61	16
50	40	31	3	8	73	73	16
63	50	38	33	9	90	90	16
75	65	44	3	10	106	106	16
90	80	51	5	11	125	125	16
110	100	61	5	12	150	150	16
125	110	69	5	13	168	168	16
140	125	76	5	14	188	188	16
160	150	86	5	16	213	213	16
200	190	106	7	18	253	253	10
225	200	119	8	19	274	274	10
250	225	131	10	20	307	307	10
280	250	142	10	23	330	330	10
315	300	162	11	27	379	379	10
355	350	184	8	30	431	431	6
400	400	206	12	30	483	483	6
450	450	155	8	30	539	539	6



Losse Flange

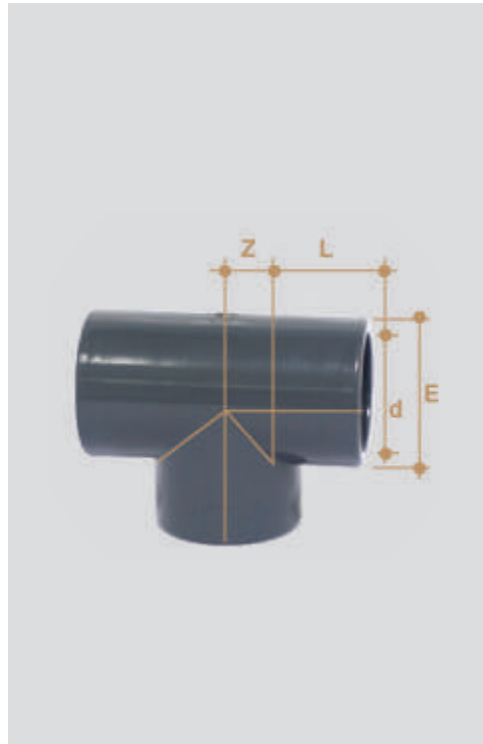
d	DN	D	E	S	I	F	PN
25	20	34	105	12	75	14	16
32	25	42	115	14	85	14	16
40	32	51	142	15	100	18	16
50	40	62	152	16	110	18	16
63	50	78	165	18	125	18	16
75	65	92	185	19	145	18	16
90	80	110	200	20	160	18	16
110	100	133	220	22	180	18	16
125	110	149	230	24	190	18	16
140	125	167	250	26	210	18	16
160	150	190	285	28	240	22	16
200	190	235	340	30	295	22	16
225	200	250	340	30	295	22	10
250	225	280	395	34	350	22	10
280	250	310	395	30	350	22	10
315	300	349	445	31	400	22	10
355	350	388	434	34	460	22	6
400	400	438	572	34	515	25	6
450	450	488	614	32	565	25	6



UPVC HIGH PRESSURE FITTINGS

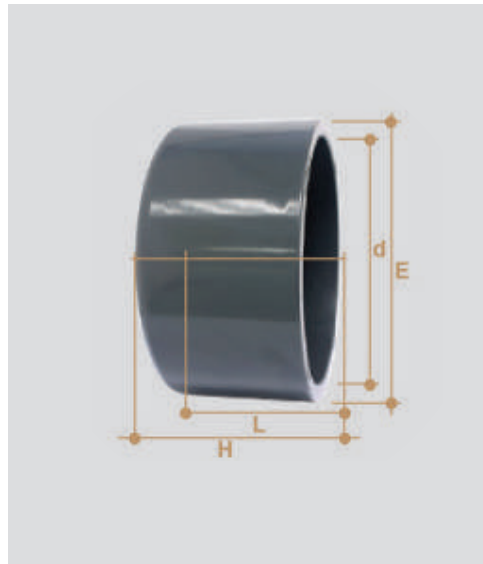
Tee 90°

D	L	Z	E	PN
16	14	9	23.5	16
20	16	11	28	16
25	19	14	34	16
32	22	17	42	16
40	26	21	51	16
50	31	26	61	16
63	38	33	75	16
75	44	39	90	16
90	51	47	108	16
110	61	57	131	16
125	69	64	145	16
140	76	72	161	16
160	86	81	186	16
200	105	102	226	10
225	119	114	258	10
250	131.5	127	287	10
280	146	142	320	10
315	162	159	355	10
355	184	294	386	6
400	206	280	432	6



Cap

d	L	Z	E	PN
16	14	22	23	16
20	16	27	28	16
25	19	31	33	16
32	22	36	41	16
40	26	43	50	16
50	31	49	60.5	16
63	38	57	75	16
75	44	67	89	16
90	51	80	106	16
110	61	95	129	16
125	69	102	145	16
140	76	114	161	16
160	86	126	181	16
200	105	145	227	10
225	119	160	254	10



UPVC HIGH PRESSURE FITTINGS

Tee 90° Female Threaded

SIZE	PN
20mm x 1/2"	16
25mm x 3/4"	16
75mm x 2 1/2"	16
90mm x 3"	16
110mm x 4"	16



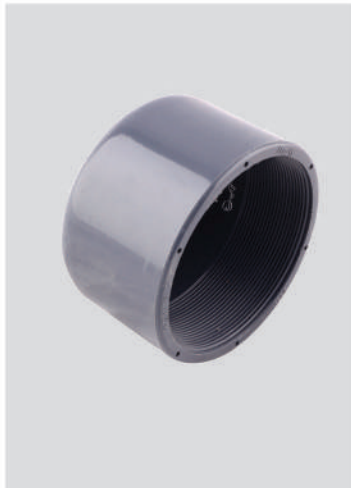
Elbow 90° Female Threaded

SIZE	PN
20mm x 1/2"	16
25mm x 3/4"	16
32mm x 1"	16
40mm x 1 1/4"	16
50mm x 1 1/2"	16
63mm x 2"	16
75mm x 2 1/2"	16
90mm x 3"	16
110mm x 4"	16
160mm x 6"	16



Cap Female Threaded

SIZE (in)	PN
1/2"	16
1"	16
3/4"	16
1 1/2"	16
2"	16
2 1/2"	16
3"	16
4"	16
6"	16



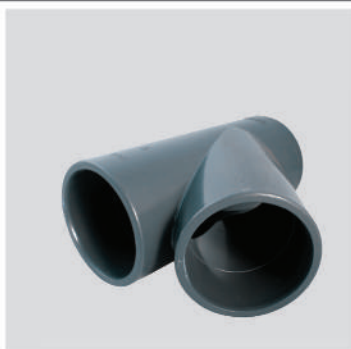
Hose Adapter

SIZE	PN
1/2"	16
1/4"	16
32x32"	16
3/4"	16
20x3/8"	16
40x40"	16
63x63"	16
1"	16
1 1/2"	16
1 1/4"	16
2"	16



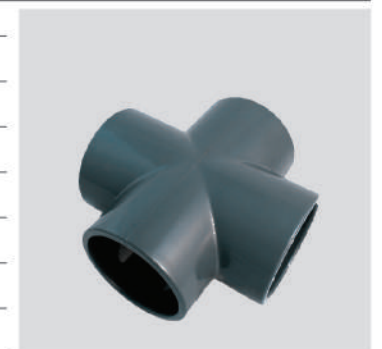
Wye

SIZE (mm)	PN
40	16
50	16
63	16
75	16
110	16
160	16



Cross Tee

SIZE (mm)	PN
32	16
40	16
50	16
63	16
75	16
90	16
110	16



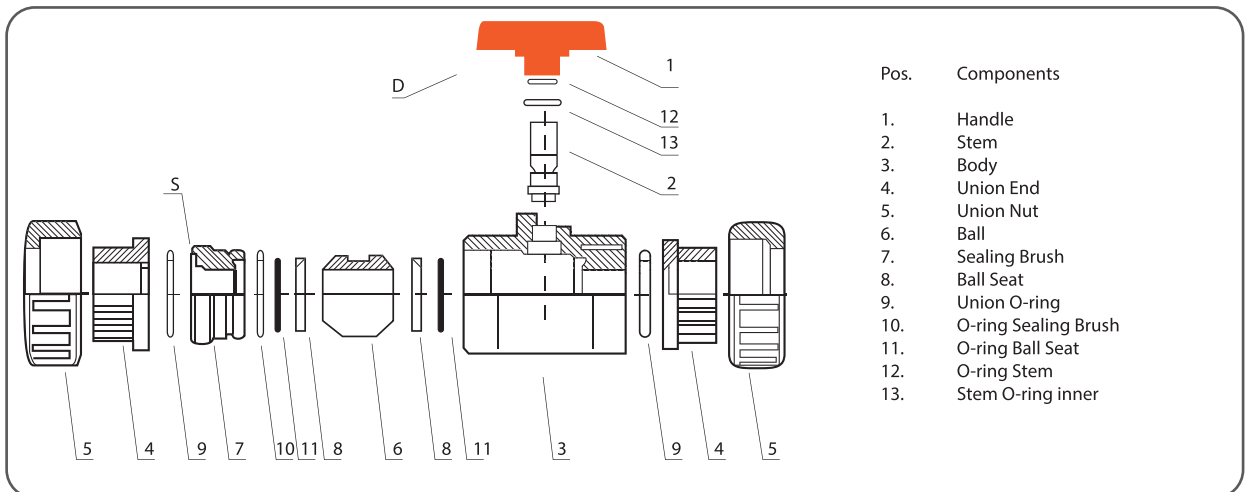
Double Union Ball Valve With Female Threaded

d	DN	L	Z	H	A	B	C	E	F	PN
3/8"	10	14	48	75	50	10	49	40	19	16
1/2"	15	16	48	80	50	10	49	40	19	16
3/4"	20	19	53	91	60	11	55	47	22	16
1"	25	22	58	102	68	13	62	55	25	16
1.1/4"	32	26	68	120	80	118	76	60	30	16
1.1/2"	40	31	78	140	96	20	88	68	35	16
2"	50	38	93	170	116	20	101	80	40	16
2.1/2"	65	44	126	214	145	25	123	90	45	10
3"	80	52	139	241	166	28	138	100	50	10
4"	100	61	159	281	210	28	160	120	60	10



Double Union Ball Valve With Female Socket

d	DN	L	Z	H	A	B	C	E	F	PN
16	10	14	48	75	75	10	49	40	19	16
20	15	16	48	80	80	10	49	40	19	16
25	20	19	53	91	91	11	55	47	22	16
32	25	22	58	102	102	13	62	55	25	16
40	32	26	68	120	120	118	76	60	30	16
50	40	31	78	140	140	20	88	68	35	16
63	50	38	93	170	170	20	101	80	40	16
75	65	44	126	214	214	25	123	90	45	10
90	80	52	139	241	241	28	138	100	50	10
110	100	61	159	281	281	28	160	120	60	10



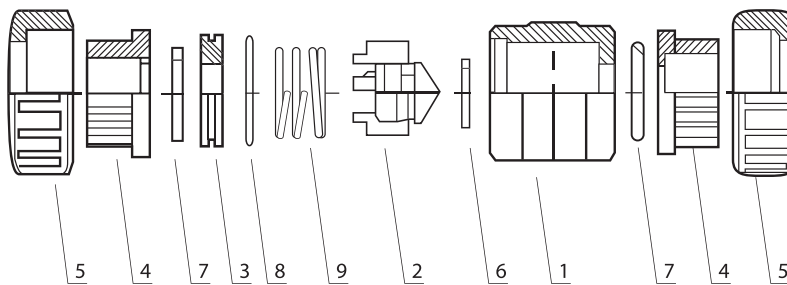
Check Ball Valve With Female Socket

d	DN	L	Z	H	A	PN
16	10	14	48	75	50	16
20	15	16	48	80	50	16
25	20	19	53	91	60	16
32	25	22	58	102	68	16
40	32	26	68	120	80	16
50	40	31	78	140	96	16
63	50	38	93	170	116	16
75	65	44	139	227	168	10
90	80	52	139	242	168	10
110	100	61	160	282	210	10



Check Ball Valve With Female Threaded

d	DN	L	Z	H	A	PN
3/8"	10	14	48	75	50	16
1/2"	15	16	48	80	50	16
3/4"	20	19	53	91	60	16
1"	25	22	58	102	68	16
1.1/4"	32	26	68	120	80	16
1.1/2"	40	31	78	140	96	16
2"	50	38	93	170	116	16
2.1/2"	65	44	139	227	168	10
3"	80	52	139	242	168	10
4"	100	61	160	282	210	10



- | Pos. | Components |
|------|---------------|
| 1. | Body |
| 2. | Shutter |
| 3. | Sealing Brush |
| 4. | Union Nut |
| 5. | Gasket |
| 6. | Union O-ring |
| 7. | O-ring |
| 8. | Spring |

UPVC HIGH PRESSURE FITTINGS

Tee 90°

R/J

d	L	Z	h	PN
63	224	76	112	16
75	245	81.5	122.5	16
90	330	115	165	16
110	410	122	206	16
160	473	141.5	238	16
200	560	152	280	10
225	615	166	308	10
250	666	176	333	10
315	780	198	390	10



Tee Reducer 90°

R/J

d	L	h1	h2	Z	PN
90x63	304	115	76	128	16
90x75	304	115	81.5	153	16
110x63	340	122	76	141	16
110x75	340	122	81.5	138	16
110x90	340	122	115	197	16
160x63	384	141	76	169	16
160x75	384	141	81.5	175	16
160x90	384	141	115	225	16
160x110	430	142	122	220	16
200x63	416	152	76	195	10
200x75	416	152	81.5	200	10
200x90	416	152	115	250	10
200x110	477	155	122	235	10
200x160	535	155	142	255	10
225x110	492	166	122	250	10
225x160	545	166	142	270	10
250x110	516	180	122	265	10
250x160	576	180	142	285	10
250x200	618	180	155	315	10
315x110	570	198	122	312	10
315x160	618	198	142	317	10
315x200	658	198	155	344	10



UPVC HIGH PRESSURE FITTINGS

Elbow 45°

R/J

d	Z	h	PN
63	92	76	16
90	136	114	16
110	162.5	122	16
160	183	141.5	16
200	210	155	10
225	222	166	10
250	248	180	10
315	298	195	10



Elbow 90°

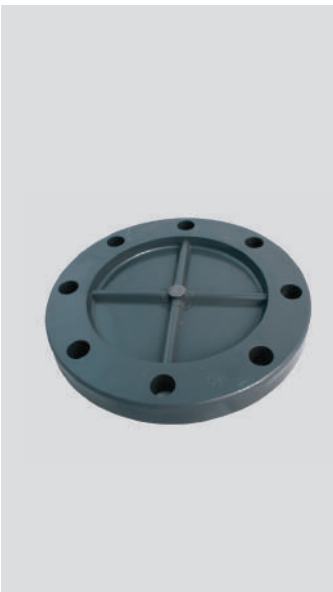
R/J

d	Z	h	PN
63	112	76	16
75	123	81.5	16
90	165	114	16
110	190	122	16
160	229	142	16
200	266	153	10
225	312	163	10
250	338	177	10
315	393	198	10



Blind Flange

Size (mm)	PN
32	16
40	16
50	16
63	16
75	16
90	16
110	16
125	16
140	16
160	16
200	10
225	10
250	10
280	10
315	10



Cap Male Threaded

Size (in)	PN
3/8"	16
1/2"	16
3/4"	16
1"	16
1 1/4"	16
1 1/2"	16
2"	16
2 1/2"	16
3"	16
4"	16



Nipple

Size (in)	PN
3/8"	16
1/2"	16
3/4"	16
1"	16
1 1/4"	16
1 1/2"	16
2"	16
2 1/2"	16
3"	16
4"	16



Reducing Socket

R/J

d	H	h1	h2	PN
90x63	210	115	76	16
110x90	255	123	116	16
160x110	305	140	122	16
200x110	324	156	122	10
200x160	325	155	140	10
225x110	362	160	122	10
225x160	355	160	140	10
225x200	355	160	155	10
250x110	385	175	122	10
250x160	375	175	140	10
250x200	372	175	155	10
250x225	375	175	165	10
315x160	431	195	140	10
315x200	430	195	155	10
315x250	435	195	182	10



UPVC HIGH PRESSURE FITTINGS

UPVC Long Radius Bend 90°

d	L	Z	E	PN
20	16	40	28	16
25	25	50	35	16
32	32	65	42	16
40	40	80	51	16
50	50	100	63	16
63	63	126	77	16
75	75	150	95	16
90	90	180	113	16
110	110	220	133	16



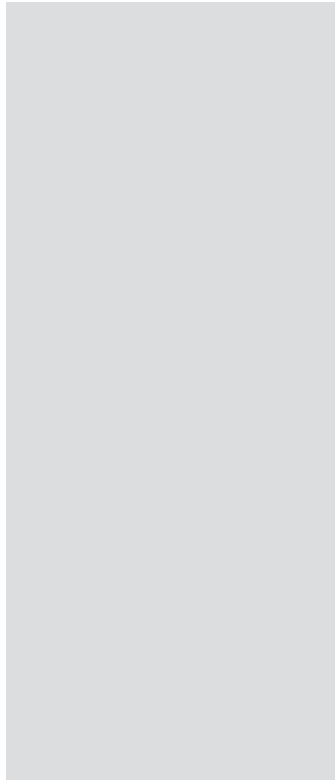
UPVC Long Radius Bend 90°

D mm	L mm
32	115
40	144
50	179
63	364
75	414
90	476
110	559
160	768



Repair Coupling

Size (mm)	CL	PN
50	5	16
63	4	10
63	5	16
75	4	10
75	5	16
90	4	10
90	5	16
110	3	6
110	4	10
110	5	16
160	3	6
160	4	10
160	5	16
200	3	6
200	4	10
200	5	16
225	3	6
225	4	10
225	5	16
250	3	6
250	5	16
280	3	6
315	5	16
630	3	6
800	3	6



UPVC Long Radius Bend 45°

D mm	L mm
160	768



UPVC SCH-40 PIPES AND FITTINGS



UPVC SCH-40 PIPES AND FITTINGS

UPVC Pipe Sch-40

مواسير

SIZE (mm)	LENGTH
1/2"	6m
3/4"	6m
1"	6m
1 1/2"	6m
1 1/4"	6m
2"	6m
2 1/2"	6m
3"	6m
4"	6m
6"	6m
8"	6m



Elbow 90°

كوع ٩٠

SIZE (in)
1/2"
3/4"
1"
1 1/2"
1 1/4"
2"
2 1/2"
3"
4"
6"
8"



Elbow 14°

كوع ٤٥

SIZE (in)
1/2"
3/4"
1"
1 1/2"
1 1/4"
2"
2 1/2"
3"
4"
6"
8"



Tee 90°

قسام

SIZE (in)
1/2"
3/4"
1"
1 1/2"
1 1/4"
2"
2 1/2"
3"
4"
6"
8"



Elbow 90°

Female Threaded

كوع ٩٠
بسّن داخلي

SIZE (in)
1/2"
3/4"
1"
1 1/2"
2"



Female Adapter

جلبة
بسّن داخلي

SIZE (in)
1/2"
3/4"
1"
1 1/2"
1 1/4"
2"
2 1/2"



UPVC SCH-40 PIPES AND FITTINGS

Socket

جلبة

SIZE (in)

1/2"

3/4"

1"

1 1/2"

1 1/4"

2"

2 1/2"

3"

4"

6"

8"



End Cap

سدة

SIZE (in)

1/2"

3/4"

1"

1 1/2"

1 1/4"

2"

2 1/2"

3"

4"

6"



Union

شدة وصل

SIZE (in)

1/2"

3/4"

1"

1 1/2"

1 1/4"

2"



Male Adapter

جلبة بسن خارجي

SIZE (in)

1/2"

3/4"

1"

1 1/2"

1 1/4"

2"

2 1/2"

3"

4"



P-Trap F/F

كوع ريحة

SIZE (in)

4"



Reducer Bush M/F

نقاص

SIZE (in)

3/4x1/2

1x1/2

1x3/4

1 1/2x1/2

1 1/2x3/4

1 1/2x1

1 1/2x1 1/4

1 1/4x1/2

1 1/4x3/4

1 1/4x1

2x1/2

2x3/4

2x1

2x1 1/2

2x1 1/4

3x1

3x2

4x2

4x3

6x4

8x6



UPVC SCH-80 PIPES AND FITTINGS



UPVC SCH-80 PIPES AND FITTINGS

UPVC Pipes

مواسير

SIZE (in)	LENGTH
1/2"	6m
3/4"	6m
1"	6m
1 1/2"	6m
1 1/4"	6m
2"	6m
2 1/2"	6m
3"	6m
4"	6m
6"	6m
8"	6m



Male Adapter

جلبة بسن خارجي

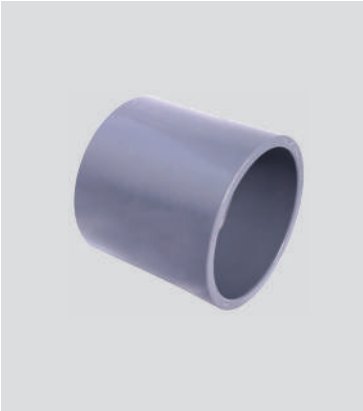
SIZE (in)
1/2"
3/4"
1"
1 1/2"
1 1/4"
2"
2 1/2"
3"
4"



Socket

جلبة

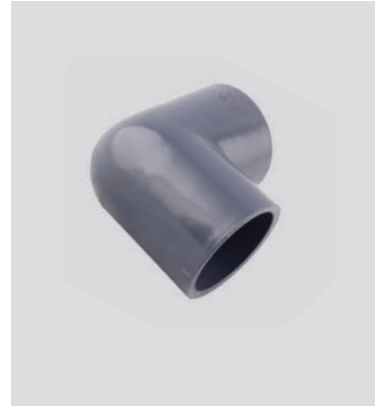
SIZE (in)
1/2"
3/4"
1"
1 1/2"
1 1/4"
2"
2 1/2"
3"
4"
6"
8"



Elbow 90°

كوع ٩٠

SIZE (in)
1/2"
3/4"
1"
1 1/2"
1 1/4"
2"
2 1/2"
3"
4"



Female Adapter

جلبة بسن داخلي

SIZE (in)
1/2"
3/4"
1"
1 1/2"
2"
2 1/2"



Elbow 90°

Female Threaded

كوع ٩٠ بسن داخلي

SIZE (in)
1/2"
3/4"
1"
1 1/4"
1 1/2"
2"



Elbow 90°

Brass Female Threaded بسن نحاس داخلي

كوع

SIZE (in)
1/2x1/2"
3/4x1/2"



Elbow 45°

كوع ٤٥

SIZE (in)
1/2"
3/4"
1"
1 1/2"
2"



UPVC SCH-80 PIPES AND FITTINGS

Reducer Bush M/F

نقاص

SIZE (in)

3/4x1/2

1x1/2

1x3/4

1 1/2x1/2

1 1/2x3/4

1 1/2x1

1 1/2x1 1/4

1 1/4x1/2

1 1/4x3/4

1 1/4x1

2x1/2

2x3/4

2x1

2x1 1/2

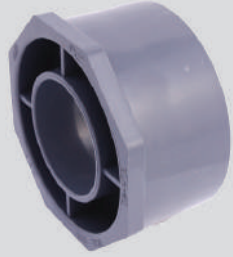
2x1 1/4

3x1

3x2

4x2

4x3



Tee 90°

قسام

SIZE (in)

1/2"

3/4"

1"

1 1/2"

1 1/4"

2"

2 1/2"

3"

4"

6"

8"



Tee 90°

Brass Female Threaded بلسن نحاس داخلي

قسام

SIZE (in)

1 1/2x1/2"

3/4x1/2"



Male Adapter

Brass Threaded

جلبة

بلسن نحاس خارجي

SIZE (in)

3/4"

1"

1 1/2"

1 1/4"

2"



Cross Over

كوع جمل

SIZE (mm)

1/2"

3/4"

1"



Union

شد وصل

SIZE (in)

1/2"

3/4"

1"

1 1/2"

1 1/4"

2"

2 1/2"

3"

4"



CHEMICAL RESISTANCE

Chemical Resistance of UPVC compound according to ISO/TR 7473 table 1

Reactives	Concentration	Temperature	
		20 °C	60 °C
Acetaldehyde	40%	NS	-
Acetaldehyde	100%	NS	-
Acetic Acid	Glacial	NS	NS
Acetic Acid	25%	S	L
Acetic Acid	60%	S	L
Acetic Anhydride	100%	NS	NS
Acetone	100%	NS	NS
Adipic Acid	Sat. sol.	S	L
Allyl Alcohol	96%	L	NS
Aluminum Chloride	Sat. sol.	S	S
Aluminum Potassium Sulphate	Sat. sol.	S	S
Aluminum Sulphate	Sat. sol.	S	S
Ammonia, Dry gas	100%	S	S
Ammonia, Liquid	100%	L	NS
Ammonia, Aqueous	Dil. sol.	S	L
Ammonium Chloride	Sat. sol.	S	S
Ammonium Fluoride	20%	S	L
Ammonium Nitrate	Sat. sol.	S	S
Ammonium Sulphate	Sat. sol.	S	S
Amyl Acetate (1-Pentanol Acetate)	100%	NS	NS
Amyl Alcohol (1-Pentanol)	100%	S	L
Aniline	100%	NS	NS
Aniline	Sat. sol.	NS	NS
Aniline Hydrochloride	Sat. sol.	NS	NS
Antimony (III) Chloride	90%	S	S
Anthraquinone Sulphonic Acid	Sol.	S	L
Arsenic Acid	Dil. sol.	S	-
Arsenic Acid	Sat. sol.	S	L
Benzaldehyde	0.1%	NS	NS
Benzene	100%	NS	NS
Benzoic Acid	Sat. sol.	L	NS
Borax	Sat. sol.	S	L
Boric Acid	Dil. sol.	S	L
Bromic Acid	10%	S	-
Bromine, Liquid	100%	NS	NS
Butadiene	100%	S	S
Butane, Gas	100%	S	-
Butanols	Up to 100%	S	L
Butyl Acetate	100%	NS	NS
Butyl Phenol	100%	NS	NS
Butyric Acid	20%	S	L
Butyric Acid	98%	NS	NS
Calcium Chloride	Sat. sol.	S	S
Calcium Nitrate	50%	S	S
Carbon Dioxide (Aqueous Solution)	Sat. sol.	L	L
Carbon Dioxide, Dry Gas	100%	S	S
Carbon Dioxide, Wet Gas	-	S	S
Carbon Disulphide	100%	NS	NS
Carbon Tetrachloride	100%	NS	NS
Chlorine, Dry Gas	100%	L	NS
Chlorine, Aqueous	Sat. sol.	L	NS
Chloroacetic Acid	Sol.	S	L
Chlorosulphonic Acid	100%	L	NS
Chromic Acid	From 1% to 50%	S	L
Citric Acid	Sat. sol.	S	S
Copper (II) Chloride	Sat. sol.	S	S
Copper (II) Fluoride	2%	S	S
Copper (III) Sulphate	Sat. sol.	S	S
Cresols	Sat. sol.	-	NS
Cresylic Acid (Methyl Benzoic Acid)	Sat. sol.	-	NS
Crotonaldehyde	100%	NS	NS
Cyclohexanol	100%	NS	NS
Cyclohexanone	100%	NS	NS
Developers (Photographic)	Work. sol.	S	S
Dextrin	Sat. sol.	S	L
Dichloroethane	100%	NS	NS
Dichloroemethane	100%	NS	NS
Diethyl ether	100%	NS	-
Diglycolic Acid	18%	S	L
Dimethylamine	30%	S	-
Ethanediol (Ethylene-glycol)	Work. sol.	S	S

CHEMICAL RESISTANCE

Chemical Resistance of UPVC compound according to ISO/TR 7473 table 1

Reactives	Concentration	Temperature	
		20 °C	60 °C
Ethanol	%95	S	L
Ethyl Acetate	%100	NS	NS
Ethyl Acrylate	%100	NS	NS
Fluosilicic Acid	%32	S	S
Formaldehyde	.Dil. sol	S	L
Formaldehyde	%40	S	S
Formic Acid	%50 to %1 From	S	L
Furfuryl Alcohol	%100	NS	NS
Gasoline (Aliphatic Hydrocarbons)	-	S	S
Glucose	.Sat. sol	S	L
Glycerol	%100	S	S
Glycolic Acid	%30	S	S
Hexadecanol	%100	S	S
Hydrobromic Acid	%10	S	L
Hydrobromic Acid	%50	S	L
Hydrobromic Acid	%20	S	L
Hydrobromic Acid	%30 Greater than	S	S
Hydrobromic Acid	%40	L	NS
Hydrobromic Acid	%60	L	NS
Hydrobromic Acid, Gas	%100	L	NS
Hydrogen	%100	S	S
Hydrogen Peroxide	%30	S	S
Hydrogen Sulphide, Gas	%100	S	S
Iron (III) Chloride	.Sat. sol	S	S
Lactic Acid	%10	S	L
Lactic Acid	%90 to %10 From	L	NS
Lead Acetate	.Dil. sol	S	S
Lead Acetate	.Sat. sol	S	S
Lead Tetraethyl	%100	S	-
Magnesium Chloride	.Sat. sol	S	S
Magnesium Sulphate	.Sat. sol	S	S
Maleic Acid	.Sat. sol	S	L
Methanol	%100	S	L
Methyl Methacrylate	%100	NS	NS
Milk	-	S	S
Molasses	.Work. sol	S	L
Nickel Sulphate	.Sat. sol	S	S
Nicotinic Acid	.Work. sol	S	S
Nitric Acid	%45 Up to	S	L
Nitric Acid	98 to 50 From	NS	NS
Oils and Fats	-	S	S
Oleic Acid	%100	S	S
Oleum	to So3 %10	NS	NS
Orthophosphoric Acid, Aqueous	%30	S	L
Orthophosphoric Acid, Aqueous	%30 Greater than	S	S
Oxalic Acid	.Dil. sol	S	L
Oxalic Acid	.Sat. sol	S	S
Oxygen	%100	S	S
Ozone	%100	S	S
Perchloric Acid	%10	S	L
Perchloric Acid	%70	L	NS
Petrol (Aliphatic Hydrocarbons/ Benzene)	20/80	NS	NS
Phenol	%90	NS	NS
Phenylhydrazine	%100	NS	NS
Phenylhydrazine Hydrochloride	%97	NS	NS
Phosphine	%100	S	S
Phosphorus (III) Chloride	%100	NS	-
Picric Acid	.Sat. sol	S	S
Potassium Bromide	.Sat. sol	S	S
Potassium Chloride	.Sat. sol	S	S
Potassium Chromate	%40	S	S
Potassium Cyanide	.Sol	S	S
Potassium Dichromate	%40	S	S
(Potassium Hexacyanoferrate (II)	.Sat. sol	S	S
(Potassium Hexacyanoferrate (III)	.Sat. sol	S	S
Potassium Hydroxide	.Sol	S	S
Potassium Nitrate	.Sat. sol	S	S
Potassium Permanganate	%20	S	S
Potassium Persulphate	.Sat. sol	S	L
Propane, Liquified Gas	%100	S	-
Pyridine	%100 Up to	NS	-

S - Excellent Resistance

L - Limited Resistance

NS - No Resistance

CPVC PIPES AND FITTINGS



CPVC PIPES AND FITTINGS

Pipe

مواسير

SIZE (in)

1/2"

3/4"

1"

1 1/4"

1 1/2"

2"

2 1/2"

3"

4"

6"

8"



Elbow

Brass Female Threaded

كوع بسّن نحاس داخلي

SIZE (in)

1/2 x 1/2"

3/4 x 1/2"



Female Adapter

Brass Threaded

جلبة بسّن نحاس داخلي

SIZE (in)

1/2 x 1/2"

3/4 x 1/2"



male Adapter

Brass Threaded

جلبة بسّن نحاس خارجي

SIZE (in)

1/2"

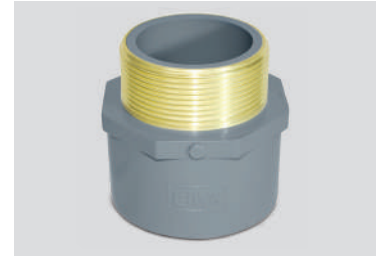
3/4"

1"

1 1/4"

1 1/2"

2"



male Adapter

جلبة بسّن خارجي

SIZE (in)

1/2 x 1/2"

3/4 x 1/2"

1"

1 1/4"

1 1/2"

2"

2 1/2"

3"

4"



Elbow 90°

كوع ٩٠

SIZE (in)

1/2"

3/4"

1"

1 1/4"

1 1/2"

2"

2 1/2"

3"

4"

6"

8"



Tee 90°

Brass Female Threaded

قسام بسّن نحاس داخلي

SIZE (in)

1/2 x 1/2"

3/4 x 1/2"



Cross Over

كوع جمل

SIZE (in)

1/2"

3/4"

1"



Elbow 90°

كوع ٩٠

SIZE (in)

1/2"

3/4"

1"

1 1/4"

1 1/2"

2"

2 1/2"

3"

4"

6"

8"



Socket

جلبة

SIZE (in)

1/2"

3/4"

1"

1 1/4"

1 1/2"

2"

2 1/2"

3"

4"

6"

8"



Tee 90°

قسام

SIZE (in)

1/2"

3/4"

1"

1 1/4"

1 1/2"

2"

2 1/2"

3"

4"

6"

8"



Union

شد وصل

SIZE (in)

1/2"

3/4"

1"

1 1/4"

1 1/2"

2"

2 1/2"

3"



Female Adapter

جلبة بسن داخلي

SIZE (in)

1/2"

3/4"

1"

1 1/4"

1 1/2"

2"

2 1/2"

3"

4"



Reducer Bush

نقاص مبطن

SIZE (in)

3/4 x 1/2"

1 x 1/2"

1 x 3/4"

1 1/4 x 1/2"

1 1/4 x 3/4"

1 1/4 x 1"

1 1/2 x 1/2"

1 1/2 x 3/4"

1 1/2 x 1"

1 1/2 x 1 1/4"

2 x 1/2"

2 x 3/4"

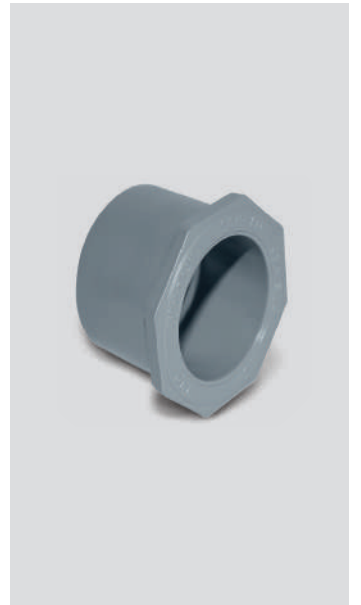
2x1"

2 x 1 1/4"

2 x 1 1/2"

3 x 1"

3 x 2"



■ Our Branches in Kingdom

■ فروعنا على مستوى المملكة



Kingdom of Saudi Arabia
Second Industrial Area - Riyadh 11454, P.O. Box 16000
Tel: +669 (11) 2652100 Fax: +966 (11) 2651252
C.C.: 10125 C.R.: 1010150498

المملكة العربية السعودية
الصناعية الثانية - الرياض ١١٤٥٤ ص.ب ١٦٠٠٠
ت: +٩٦٦ (١١) ٢٦٥٢١٠٠ ف: +٩٦٦ (١١) ٢٦٥١٢٥٢
رقم العضوية: ١٠١٢٥ س.ت: ١٠١٠١٥٠٤٩٨

الرياض - جدة - الدمام - المدينة - القصيم - نجران - جيزان - خميس مشيط

 www.plasco.com.sa

PLASCO CERTIFICATES



Notes :

A large area of the page is filled with horizontal dotted lines, providing a space for writing notes.



بلاسكو للصناعات البلاستيكية
PLASCO FOR PLASTIC INDUSTRIES

رؤية
VISION
2030
المملكة العربية السعودية
KINGDOM OF SAUDI ARABIA

Kingdom of Saudi Arabia : المملكة العربية السعودية
Second Industrial Area - Riyadh 11454, P.O. Box 16000 : الصناعية الثانية - الرياض ١١٤٥٤ ص.ب ١٦٠٠٠
Tel: +669 (11) 2652100 Fax: +966 (11) 2651252 : ت: +٦٦٩ (١١) ٢٦٥٢١٠٠ ف: +٩٦٦ (١١) ٢٦٥١٢٥٢
C.C.: 10125 C.R.: 1010150498 : رقم العضوية : ١٠١٢٥ س.ت: ١٠١٠١٥٠٤٩٨

الرياض - جدة - الدمام - المدينة - القصيم - نجران - جيزان - خميس مشيط

 www.plasco.com.sa