



range introduction

Cablelink Plus Screed System provides adaptable power and data distribution highways in screeded floors.

Specifically designed to offer superior load bearing performance and greater robustness.

The Screed System consists of Service Outlet Boxes, Junction Boxes, Vertical Access Boxes, PVCu and Metal Ducting. These can be used together to provide a complete layout in floors with a screed depth as low as 53mm.

feature benefits

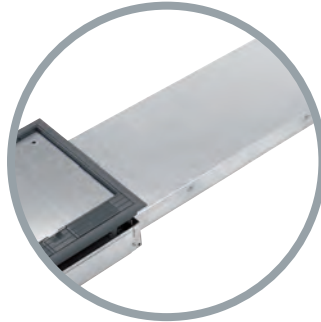
- **Tested to EN50085-2-2 to accept 5000N load**
- **The system incorporates numerous design features to ensure a fast and simple installation**
- **Designed to support Cat 6 structured cabling systems**
- **Suitable for screeded depth from 53mm to 110mm**
- **Floorboxes are IP2X rated in accordance with BS EN50085-1**
- **Choice of 1, 2, 3 or 4 compartment floorboxes**
- **Self Closing lid in accordance with IEC 61534-22**
- **Wide range of power and data accessories available to meet all requirements**
- **PVCu ducting manufactured from 100% recycled material**
- **Quality, reliability and safety come as standard**
- **Provision of RCD protection supports compliance with the 17th Edition Wiring Regulations**
- **5 year guarantee**

screeded floor systems

TESTED TO EN50085-2-2 TO ACCEPT 5000N LOAD

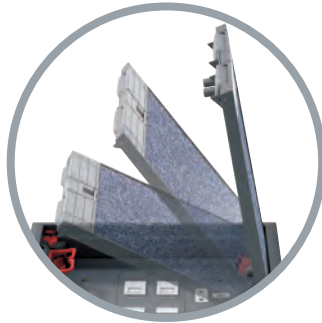
DUCTING

- Choice of PVCu or metal
- PVCu ducting sizes: 90 x 35mm and 60 x 25mm, 50x25mm, 75x25mm, 100x25mm
- PVCu ducting manufactured from 100% recycled material



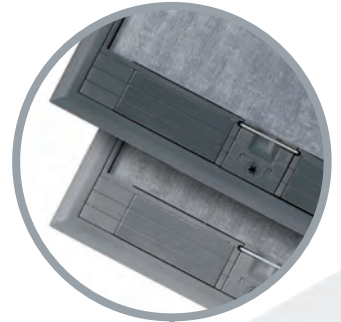
LID OPENING TO 80°

- Self closing lid in accordance with draft IEC 61534-22



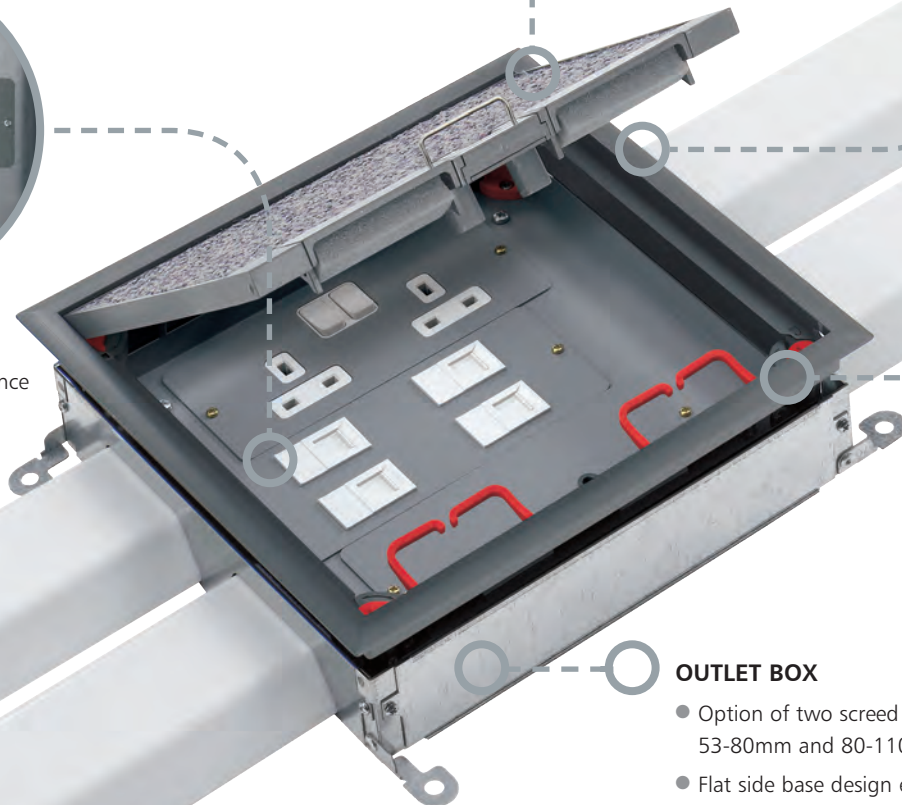
OUTLET BOX COLOUR

- 'Grey' or 'Light Grey' option



STAGGERED PLATES

- Provides strain relief clearance for moulded plugs



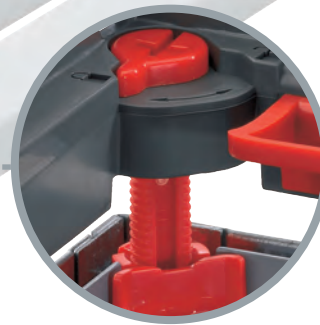
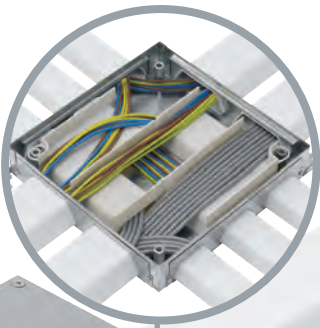
OUTLET BOX

- Option of two screed depth variants: 53-80mm and 80-110mm
- Flat side base design ensures a stronger screed solution and faster taping
- Optional 10mm plate height adjustment kit for increased wiring space to support Cat 6 compliance
- IP2X rated in accordance with BS EN 50085-1

screeded floor systems

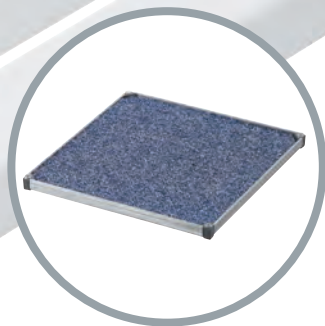
JUNCTION BOX FLY OVER

- Allows for 'through', 'tee', 'angle' and 'crossover' configurations
- Supports Cat 6 compliance



RATCHET LEVELLING SYSTEM

- Self levelling and rapid fitting of frame and lid



JUNCTION BOX

- Supplied with plain lid and cable flyover, optional recessed lids available



BASE FIXING FEET

- Fast fix installation



DISPOSABLE STEEL SCREEDING LID

- Supplied with all Cablelink Plus Screed Floorboxes
- Recyclable

SIDE ADAPTOR PLATE OPTIONS

- Selection of side plates to suit PVCu or metal ducting



screeded floor systems

Service Outlet Box

TESTED TO EN50085-2-2 TO ACCEPT 5000N LOAD

ROBUST CORD CAPS

- Designed to improve retention

HANDLE

- Designed for improved accessibility

OPTIONAL LOCKABLE LID

- Added security when not in use

CABLE RETAINERS

- Supplied as standard

LID

- Simple carpet cut out
- 8mm or 12mm recessed lids available
- Can be hinged from either of two sides

SQUARE BOX OPTION

- 90° rotation of floorbox for system flexibility

RATCHET LEVELLING SYSTEM

- Self levelling and rapid fitting of frame and lid

OPTIONAL LID TETHER

- Added security
- Eliminates lid losses

STAGGERED PLATE

- Provides strain relief clearance for moulded plug tops

COMPARTMENT SEGREGATION

OUTLET BOX

- Option of two screed depths: 53-80mm and 80-110mm
- Flat sided base design ensures a stronger screed solution and faster taping
- Optional 10mm plate height adjuster kit for greater screed depths to support Cat 6 compliance
- IP2X rated in accordance with BS EN50085-1

BASE FIXING FEET

- Fast fix installation

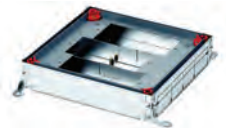
Screeded Outlet Boxes

The Service Outlet Box should be positioned directly on the structural floor slab. The box provides location and connection facilities for power and data service outlets.

Service Outlet Box selector guide

- Service Outlet Boxes are ordered as two parts – “Base” and “Frame and Lid”
- Base – identify screed depth, number of compartments required and preferred box size
- Frame and Lid – choose trim colour and lid recess depth
- Side Adaptor Plates – choose alternative to metal ducting if required
- Accessory Plates – select from wide range of power and data options – see page 65
- Optional Extras – e.g. lid tether and 10mm plate height adjustment kit for increased wiring space
- Alternative deeper Service Outlet Boxes for alternative screed depths are available – please contact MK ME Office for details

Base



BASE SIZE COMPARTMENT	100 x 200mm 1	200 x 200mm 2	265 x 265mm 2	265 x 265mm 3	300 x 300mm 2	300 x 300mm 3	340 x 265mm 3	340 x 265mm 4
Screed 53-80mm 35mm wiring space	CUB100-1*	CUB200-2	CUB265-2	CUB265-3	CUB300-2	CUB300-3	CUB340-3	CUB340-4
Screed 80-110mm 35mm wiring space	CUB100X-1*	CUB200X-2	CUB265X-2	CUB265X-3	CUB300X-2	CUB300X-3	CUB340X-3	CUB340X-4

Increased wiring space of 45mm below the plate is required to achieve Cat 6 compliance. Wiring space can also be reduced to 25mm when used in shallow screed depths. Both require the use of a plate height adjustment kit - part number CUBA-1 or CUBA-2.

For **200x200mm** bases, use ‘Compact’ power and data plates only – see page 65.

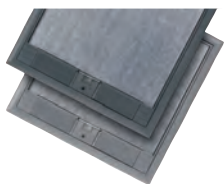
Disposable steel screed lid (recyclable) supplied as standard.

If screed depth is 53mm, reduce wiring space to 25mm by use of suitable CUBA kit and use side wired socket outlets – see page 65.

Supplied with two metal trunking entry side plates as standard. See page 65 for alternative plates.

*For 100x200mm boxes, the compatible power plate is CXP 10745. For switched option in 100x200mm box, please contact MK ME office.

Frames and Lid



FRAME/LID SIZE	100 x 200mm	200 x 200mm	265 x 265mm	300 x 300mm	340 x 265mm
Recess: 8mm	CXL100-8GRY CXL100-8LGY	CXL200-8GRY* CXL200-8LGY*	CXL265-8GRY* CXL265-8LGY*		CXL340-8GRY* CXL340-8LGY*
		CXL200-12GRY CXL200-12LGY	CXL265-12GRY CXL265-12LGY	CXL300-12GRY CXL300-12LGY	CXL340-12GRY* CXL340-12LGY*

Choose from Grey (GRY) or Light Grey (LGY) finish.

* Lockable option available – add suffix ‘L’ e.g. CXL265-8GRYL. Floorboxes must never be locked whilst in use. Not supplied with key.

An optional 2mm lid packer is available when used with thinner carpet tiles – see Optional Extras below.

If a 12mm lid is required for use in 80-110mm screed, please add ‘X’ e.g. CXL265X-12GRY.

** For 12mm recess depth lids use Onix Plus™ base, see page 51 i.e. **NXB265-3**

Side Adaptor Plates



PLATE TYPE/BOX SIZE	200 x 200mm	265 x 265mm	300 x 300mm	340 x 265mm
Blank	CUBP200-01	CUBP265-01	CUBP300-01	CUBP340-01
Round Conduit*	CUBP200-02	CUBP265-02	CUBP300-02	CUBP340-02
PVC 60x25mm	CUBP200-03	CUBP265-03	CUBP300-03	CUBP340-03
PVC 90x35mm	CUBP200-04	CUBP265-04	CUBP300-04	CUBP340-04
PVC 50x25mm	CUBP200-05	CUBP265-05	CUBP300-05	CUBP340-05
PVC 75x25mm	CUBP200-06	CUBP265-06	CUBP300-06	CUBP340-06
PVC 100x25mm	CUBP200-07	CUBP265-07	CUBP300-07	CUBP340-07
Metal Ducting	CUBP200-08	CUBP265-08	CUBP300-08	CUBP340-08

See page 63 for information regards PVCu ducting, page 64 for metal ducting.

* Knockouts 20mm and 25mm

Optional Extras



Lid Tether

PART NO.	DESCRIPTION	PART NO.	DESCRIPTION
CX-01	Cable Retainers – pack of 10	CXLP100	Lid Packer 100x200 2mm
CX-02	Lid Tether Kit	CXLP200	Lid Packer 200x200 2mm
CX-03GRY	Cord Cap for 100x200 and 200x200mm Lid Grey	CXLP265	Lid Packer 265x265 2mm
		CXLP340	Lid Packer 340x265 2mm
CX-03LGY	Cord Cap for 100x200 and 200x200mm Lid Light Grey	CUBA-1	Plate Height Adjustment Kit +/- 10mm. Suitable for 265x265mm and 340x265mm boxes only
CX-04GRY	Cord Cap for 265x265 and 340x265mm Lid Grey	CUBA-2	Plate Height Adjustment Kit +/- 10mm. Suitable for 100x200mm and 200x200mm boxes only
CX-04LGY	Cord Cap for 265x265 and 340x265mm Lid Light Grey	CUBA-3	Plate Height Adjustment Kit +/- 10mm. Suitable for 300x300mm boxes only
CX-05	Ratchet levelling to the optional extras	CRXKEY	Lock Key – pack of 2

screeded floor systems

Junction Box

CHOICE OF JUNCTION BOX LID

- Supplied with a plain lid, optional recessed lids available

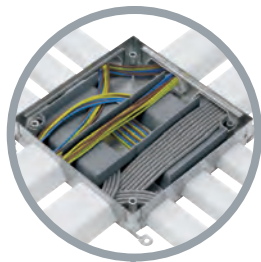


DISPOSABLE STEEL SCREEDING LID

- Supplied with all Cablelink Plus Screed Floorboxes
- Recyclable

JUNCTION BOX FLY OVER

- Allows for 'through,' 'tee,' 'angle' and 'crossover' configurations
- Supports Cat 6 compliance



OPTIONAL RECESSED LID

- Simple carpet cut out
- Optional 'lid packer' available

BASE FIXING FEET

- Fast fix installation



JUNCTION BOX

- Option of two screed depth variants: 53-80mm and 80-110mm
- Flat side base design ensures a stronger screed solution and faster taping
- Supplied with cable flyover
- IP2X rated in accordance with BS EN 50085-1

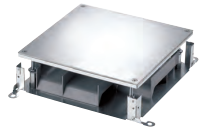
Junction Boxes

The Junction Box should be positioned directly on the structural floor slab. The box provides access to cables at the intersection of ducting runs or changes of direction. The ducting forms a system of tunnels to segregate services within the junction box.

Junction Box selector guide

- Junction Boxes are supplied as a base, lid and cable flyover as standard
- Lid – supplied complete as a plain flat lid as standard
- Alternative deeper Junction Boxes are available – please contact MK ME Office for details

Junction Box



DEPTH/BASE SIZE	200 x 200mm	265 x 265mm	300 x 300mm	340 x 340mm
53-80mm	CUJ200	CUJ265	CUJ300	CUJ340
80-110mm	CUJ200X	CUJ265X	CUJ300X	CUJ340X

Supplied complete with a plain flat lid, disposable steel screed lid and cable flyover as standard.
Supplied with four side adaptor plates 2x blank and 2x metal ducting plates. See below for alternative plates.
* For ordering Junction box without plain flat lid, put "WL" to the part no. eg - CUJ200-WL

Recessed Lid and Frame



RECESS/BASE SIZE	200 x 200mm	265 x 265mm	300 x 300mm	340 x 340mm
DEPTH 53-80MM				
Recess depth 8mm	CUJL200-8GRY	CUJL265-8GRY	CUJL300-8GRY	CUJL340-8GRY
	CUJL200-8LGY	CUJL265-8LGY	CUJL300-8LGY	CUJL340-8LGY
Recess depth 12mm	CUJL200-12GRY	CUJL265-12GRY	CUJL300-12GRY	CUJL340-12GRY
	CUJL200-12LGY	CUJL265-12LGY	CUJL300-12LGY	CUJL340-12LGY
DEPTH 80-110MM				
Recess depth 8mm	CUJL200X-8GRY	CUJL265X-8GRY	CUJL300X-8GRY	CUJL340X-8GRY
	CUJL200X-8LGY	CUJL265X-8LGY	CUJL300X-8LGY	CUJL340X-8LGY
Recess depth 12mm	CUJL200X-12GRY	CUJL265X-12GRY	CUJL300X-12GRY	CUJL340X-12GRY
	CUJL200X-12LGY	CUJL265X-12LGY	CUJL300X-12LGY	CUJL340X-12LGY

Supplied as a recessed lid to accept floor covering.

Side Adaptor Plates



PLATE TYPE/BOX SIZE	200 x 200mm	265 x 265mm	300 x 300mm	340 x 340mm
Blank	CUBP200-01	CUBP265-01	CUBP300-01	CUBP340-01
Round Conduit*	CUBP200-02	CUBP265-02	CUBP300-02	CUBP340-02
PVC 60x25mm	CUBP200-03	CUBP265-03	CUBP300-03	CUBP340-03
PVC 90x35mm	CUBP200-04	CUBP265-04	CUBP300-04	CUBP340-04
PVC 50x25mm	CUBP200-05	CUBP265-05	CUBP300-05	CUBP340-05
PVC 75x25mm	CUBP200-06	CUBP265-06	CUBP300-06	CUBP340-06
PVC 100x25mm	CUBP200-07	CUBP265-07	CUBP300-07	CUBP340-07
Metal Ducting	CUBP200-08	CUBP265-08	CUBP300-08	CUBP340-08

See page 63 for information regards PVCu ducting, page 64 for metal ducting.

* Knockouts 20mm and 25mm.

Optional Extras

PART NO.	DESCRIPTION
CXLP200J	Junction Box Lid Packer 200x200 2mm
CXLP265J	Junction Box Lid Packer 265x265 2mm
CXLP340J	Junction Box Lid Packer 340x340 2mm

screeded floor systems

Vertical Access Boxes

The Vertical Access Box provides draw-in facilities to allow for a change of plane or direction of the ducting and connection to skirting trunking systems, distribution boards, boxes etc.

- Conduit or ducting can be run vertically or horizontally from the box

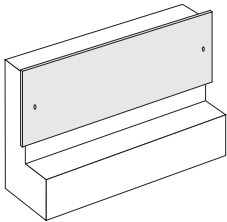
Vertical Access Boxes – for PVC Ducting



LIST NO.	TYPE	LIST NO.	TYPE
Shallow		Full Access	
SF88152	Twin	SF88172	Twin
SF88153	Triple	SF88173	Triple

When using VAB with 2 or 3 compartment skirting trunking boxes, with dimension B = 270 should be used to give maximum accessibility

Cover Plates – for Vertical Access Boxes (PVC Ducting)



LIST NO.	TYPE	LIST NO.	TYPE
Overlapping Shallow		Flush Shallow	
SF88180	Twin	SF88176	Twin
SF88181	Triple	SF88177	Triple
Overlapping Full Access		Flush Full Access	
SF88188	Twin	SF88184	Twin
SF88189	Triple	SF88185	Triple

Vertical Access Boxes – for Metal Ducting



BOX SIZE	265mm	265mm	340mm
Vertical Access Box	CUV265-2	CUV265-3	CUV340-3

Supplied with flush cover plate and Metal Ducting side adaptor plate:
265mm box = CUBP265-08, 340mm box = CUBP340-08.

Spares

BOX SIZE	265mm	340mm
OVERLAPPING COVER PLATES	CUVP265	CUVP340

Supplied as singles.

Ducting and Accessories

The ducting is intended primarily for installation within the floor screed thickness, but it can also be cast direct into the structural slab, attached to the soffit with access through from the floor above or used for vertical service risers.

- Underfloor ducting is available in 5 sizes.
- Extruded from PVCu using 100% recycled material
- Maximum cable capacity and strength with minimum screed cover

PVCu Ducting

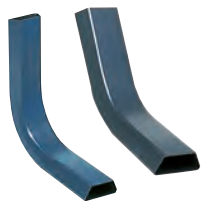


3m lengths	
60x25mm	SF88200
90x35mm	SF88100
50x25mm	UFD125W
75x25mm	UFD232W
100x25mm	UFD332W

Ducting Bends



PART NO.	DUCTING SYSTEM	ANGLE	MEAN CENTRE LINE RADIUS
PVCu ducting horizontal bends			
SF88144	SF88100	90°	465mm
SF88145	SF88100	45°	465mm
SF88248	SF88200	90°	450mm
SF88249	SF88200	45°	450mm



PVCu ducting vertical bends			
SF88142	SF88100	90°	100mm
SF88143	SF88100	45°	100mm
SF88246	SF88200	90°	95mm
SF88247	SF88200	45°	95mm

Ducting Bends require the jointing sleeve to connect to the ducting

Accessories



PART NO.	DESCRIPTION
SF88106	Jointing Sleeve (SF88100). Pack of 5
SF88206	Jointing Sleeve (SF88200). Pack of 5
CUFC60-2	2 Compartment Fixing Clip (SF88200). Pack of 10
CUFC60-3	3 Compartment Fixing Clip (SF88200). Pack of 10
SF88116	2 Compartment Fixing Clip (SF88100). Pack of 10
SF88117	3 Compartment Fixing Clip (SF88100). Pack of 10
SF88105	Conduit entry adaptor for PVC ducting VAB's pack of 5
SF88107	Ducting Adaptor. Pack of 5
SF88150	Duct Reducer. Pack of 5

PART NO.	DESCRIPTION
UJ125W	Jointing Sleeve for 4J125W
UJ232W	Jointing Sleeve for 4J232W
UJ332W	Jointing Sleeve for 4J332W
UCP150	Fixing Clip 1 x 50 x 25mm PVC Duct
UCP175	Fixing Clip 1 x 75 x 25mm PVC Duct
UCP1100	Fixing Clip 1 x 100 x 25mm PVC Duct
UCP250	Fixing Clip 2 x 50 x 25mm PVC Duct
UCP275	Fixing Clip 2 x 50 x 25mm PVC Duct
UCP2100	Fixing Clip 2 x 75 x 25mm PVC Duct
UCP350	Fixing Clip 3 x 100 x 25mm PVC Duct
UCP375	Fixing Clip 3 x 75 x 25mm PVC Duct
UCP3100	Fixing Clip 3 x 100 x 25mm PVC Duct

screeded floor systems

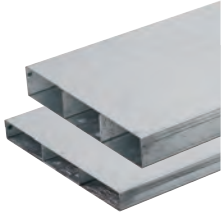
Metal Ducting System

Metal Ducting Systems are offered as an alternative to PVCu systems.

- Provide greater cable protection
- Provides EMC Screening
- Manufactured from pre-galvanised sheet steel



Metal Ducting



DUCTING WIDTH	100mm	225mm	225mm	250mm	275mm	275mm	300mm
COMPARTMENT	1	2	3	3	2	3	3
DUCTING HEIGHT							
25mm	CUD100-25-1	CUD225-25-2	CUD225-25-3	CUD250-25-3	CUD275-25-2	CUD275-25-3	CUD300-25-3
38mm	CUD100-38-1	CUD225-38-2	CUD225-38-3	CUD250-38-3		CUD275-38-3	CUD300-38-3

Supplied in lengths of 2.44m.

Joint Sleeves



DUCTING WIDTH	100mm	225mm	250mm	275mm	300mm
DUCTING HEIGHT					
25mm	CUDJ100-25	CUDJ225-25	CUDJ250-25	CUDJ275-25	CUDJ300-25
38mm	CUDJ100-38	CUDJ225-38	CUDJ250-38	CUDJ275-38	CUDJ300-38

Fixing Clips



DUCTING WIDTH	100mm	225mm	250mm	275mm	300mm
DUCTING HEIGHT					
25mm	CUDF100-25	CUDF225-25	CUDF250-25	CUDF275-25	CUDF300-25
38mm	CUDF100-38	CUDF225-38	CUDF250-38	CUDF275-38	CUDF300-38

Side Adaptor Plates



SIDE PLATE	CUBP200-01	CUBP200-02	CUBP200-03	CUBP200-04	CUBP200-08
Aperture Type	Blank Blank	Round Conduit*	PVC	PVC	Metal Ducting
Aperture Size		25 / 20	60 / 25	90 / 35	Up to 100x38
No. per plate		2/2	2	1	

SIDE PLATE	CUBP265-01	CUBP265-02	CUBP265-03	CUBP265-04	CUBP265-08
Aperture Type	Blank Blank	Round Conduit*	PVC	PVC	Metal Ducting
Aperture Size		25 / 20	60 / 25	90 / 35	Up to 225x38
No. per plate		3/2	3	2	

SIDE PLATE	CUBP340-01	CUBP340-02	CUBP340-03	CUBP340-04	CUBP340-08
Aperture Type	Blank Blank	Round Conduit*	PVC	PVC	Metal Ducting
Aperture Size		25 / 20	60 / 25	90 / 35	Up to 300x38
No. per plate		4/4	4	3	

See page 63 for information regards PVCu ducting, page 64 for metal ducting.

* Knockouts 20mm and 25mm.

Accessory Plates

Accessory plates are common to most ranges, they will fit all Cablelink Plus Screed, Single Pan, Flush and Onix Plus™ Floorboxes. Standard Plates are for use with 100x200mm, 265x265mm and 340x265mm Floorboxes. Compact Plates are for use with 200x200mm Floorboxes only. Both Standard and Compact Plates are supplied in Light Grey (LGY) finish.

Serviced Power Plates



CXP10730



CXP10731NS



CXP10745



CXP10735

STANDARD PART NO.	COMPACT PART NO.	DESCRIPTION
CXP10730*†	CXPC10730*†	2G 13A Switch Socket Outlet
CXP10730NS*†	CXPC10730NS*†	2G 13A Switch Socket Outlet Non-Standard (T Pin)
CXP10731†	CXPC10731†	2G 13A Socket Outlet
CXP10731NS†	CXPC10731NS†	2G 13A Socket Outlet Non-Standard (T Pin)
CXP10745*	CXPC10745*	2G 13A Angled Socket Outlet – Power plate for CUB100
CXP10735	CXPC10735	2G 13A RCD Switch Socket Outlet**
CXP10760		2G 13A Switch Socket Outlet – Side Wired
CXP10720*		3G 13A Socket Outlet
CXP10740	CXPC10740	2G 16A 2P+E German Socket Outlet (non UK)**
CXP10741	CXPC10741	2G 15A 127V USA Socket Outlet (non UK)

* For Clean Earth wiring – add suffix 'CE' e.g CXP10730CE.

** Requires a 45mm wiring space.

Clean Earth switched power plates are identified with red rockers, unswitched with red sockets.

† Plates are supplied with the MK Electric 3-pin safety shutter. Compact Plates (power and data) are for use with 200x200mm bases only.

Unserviced Power Plates

STANDARD PART NO.	COMPACT PART NO.	DESCRIPTION
CXP20106	CXPC20106	1G Accessory Plate with 60.3mm fixing centres
CXP20107*		2G accessory Plate with 120.6mm fixing centres

* Recommend that an MK Electric Aspect, Edge or Logic Plus Socket Outlet is used

Unserviced Data Plates



CXP20201



CXP20215



CXP20301



CXP30501



CXP30201

STANDARD PART NO.	COMPACT PART NO.	DESCRIPTION
CXP20101	CXPC20101	2 x LJU/2 Apertures
CXP20200	CXPC20200	2 x LJU6C Apertures
CXP20201*	CXPC20201*	4 x LJU6C Apertures
CXP20215	CXPC20215	4 x LJU6C Wave Apertures
CXP20205	CXPC20205	4 x Krone Apertures
CXP20301	CXPC20301	6 x LJU6C Apertures
CXP30501	CXPC30501	2 x Euro 50x50mm Apertures
CXP30503		1 x Euro 150x50mm Aperture
CXP30502	CXPC30502	2 x 45x45mm Apertures
CXP20117	CXPC20117	4 x Alphasnap (Aperture 47.5mm x 23.6mm)
CXP20500	CXPC20500	4 x ST Fibre Connector Apertures
CXP30201	CXPC30201	Blank Plate

* Data apertures are supplied as knockouts.

Compact Plates (power and data) are for use with 200x200mm bases only.

screeded floor systems

Screed System Product Selection Table

SCREED OUTLET BOX									
BASE SIZE		100 X 200 mm	200 X 200 mm	265 X 265 mm	265 X 265 mm	300 X 300 mm	300 X 300 mm	340 X 265 mm	340 X 265 mm
NUMBER OF COMPARTMENTS		1	2	2	3	2	3	3	4
BASE	53-80mm	CUB100-1	CUB200-2	CUB265-2	CUB265-3	CUB300-2	CUB300-3	CUB340-3	CUB340-4
	80-100mm	CUB100X-1	CUB200X-2	CUB265X-2	CUB265X-3	CUB300X-2	CUB300X-3	CUB340X-3	CUB340X-4
LID & FRAME	8mm RECESS	CXL100-8GRY	CXL200-8GRY	CXL265-8GRY	CXL265-8GRY	CXL300-12GRY	CXL300-12GRY	CXL340-8GRY	CXL340-8GRY
ADAPTOR PLATE SIZE		N/A	200	265	265	300	300	340	340
SIDE PLATES AS STD (METAL DUCTING)		N/A	2 X CUBP200-08	2 X CUBP265-08	2 X CUBP265-08	2 X CUBP300-08	2 X CUBP300-08	2 X CUBP340-08	2 X CUBP340-08
SIDE PLATES AS STD (BLANK)		N/A	2 X CUBP200-01	2 X CUBP265-01	2 X CUBP265-01	2 X CUBP300-01	2 X CUBP300-01	2 X CUBP340-01	2 X CUBP340-01
OPTIONAL SIDE PLATE ADAPTORS		N/A	CUBP200-02	CUBP265-02	CUBP265-02	CUBP300-02	CUBP300-02	CUBP340-02	CUBP340-02
		N/A	CUBP200-03	CUBP265-03	CUBP265-03	CUBP300-03	CUBP300-03	CUBP340-03	CUBP340-03
		N/A	CUBP200-04	CUBP265-04	CUBP265-04	CUBP300-04	CUBP300-04	CUBP340-04	CUBP340-04
		N/A	CUBP200-05	CUBP265-05	CUBP265-05	CUBP300-05	CUBP300-05	CUBP340-05	CUBP340-05
		N/A	CUBP200-06	CUBP265-06	CUBP265-06	CUBP300-06	CUBP300-06	CUBP340-06	CUBP340-06
		N/A	CUBP200-07	CUBP265-07	CUBP265-07	CUBP300-07	CUBP300-07	CUBP340-07	CUBP340-07

JUNCTION BOX					
BASE SIZE		200 X 200 mm	265 X 265 mm	300 X 300 mm	340 X 340 mm
NUMBER OF COMPARTMENTS		2	3	3	3
BASE	53-80mm	CUJ200	CUJ265	CUJ300	CUJ340
	80-110mm	CUJ200X	CUJ265X	CUJ300X	CUJ340X
JUNCTION BOX FLY OVER INCLUDED		2 WAY	3 WAY	3 WAY	3 WAY
LID SUPPLIED AS STANDARD		PLAIN FLAT	PLAIN FLAT	PLAIN FLAT	PLAIN FLAT
LID OPTIONS AVAILABLE					
DEPTH 53-80mm	8mm RECESS	CUJL200-8	CUJL265-8	CUJL300-8	CUJL340-8
	12mm RECESS	CUJL200-12	CUJL265-12	CUJL300-12	CUJL340-12
DEPTH 80-110mm	8mm RECESS	CUJL200X-8	CUJL265X-8	CUJL300X-8	CUJL340X-8
	12mm RECESS	CUJL200X-12	CUJL265X-12	CUJL300X-12	CUJL340X-12
ADAPTOR PLATE SIZE		200	265	300	340
SIDE PLATES AS STANDARD		4 X CUBP200-08	4 X CUBP265-08	4 X CUBP300-08	4 X CUBP340-08
OPTIONAL SIDE PLATE ADAPTORS		CUBP200-01	CUBP265-01	CUBP300-01	CUBP340-01
		CUBP200-02	CUBP265-02	CUBP300-02	CUBP340-02
		CUBP200-03	CUBP265-03	CUBP300-03	CUBP340-03
		CUBP200-04	CUBP265-04	CUBP300-04	CUBP340-04
			CUBP265-08	CUBP300-08	CUBP340-08

VERTICAL ACCESS BOX	METAL DUCTING	
	265MM	340MM
SIZE	2	3
NUMBER OF COMPARTMENTS	2	3
VERTICAL ACCESS BOX	CUV 265	CUV 340
COVER PLATES - AS STANDARD	FLUSH	FLUSH
COVER PLATES - OPTIONAL	CUVP 265	CUVP 340

VERTICAL ACCESS BOX	PVC _u DUCTING			
	SHALLOW		FULL ACCESS	
SIZE	2	3	2	3
NUMBER OF COMPARTMENTS	2	3	2	3
VERTICAL ACCESS BOX	SF88152	SF88153	SF88172	SF88173
COVER PLATES - OVERLAPPING	SF88180	SF88181	SF88188	SF88189
COVER PLATES - FLUSH	SF88176	SF88177	SF88184	SF88185