



SAMNAN JH-Series Centrifugal



The SAMNAN JH-Series Centrifugal Pumps feature a NEW, stronger, re-designed pump volute that resists cracking, offering increased pump performance; interchangeable with earlier SAMNAN JH-Series pump models.

APPLICATIONS

- Water systems and sprinkling... for homes, farms and industry.

SPECIFICATIONS

- Body and Seal Plate** – Close-grained cast iron – Class 30
- Base** – Steel 12 gauge
- Impeller** – 20% glass filled polycarbonate
- Shaft** – 416 stainless steel
- Mechanical Seal** – Carbon/ceramic, Buna-N



FEATURES

- 1/2 through 2-1/2 HP Models** – Feature heavy-duty motors, easy service design and four-position discharge.
- Drain Port** – Provided for easy winterizing.
- Capacity** – Delivers up to 130 Ft. (41 M) of head with capacities to 80 GPM (18 M/Hr).
- Easy Serviceability** – All models include replaceable wear ring and feature back pull-out design.
- Impellers** – 20% glass reinforced polycarbonate; abrasion-resistant for normal applications with working temperatures to 140°F.

ORDERING INFORMATION

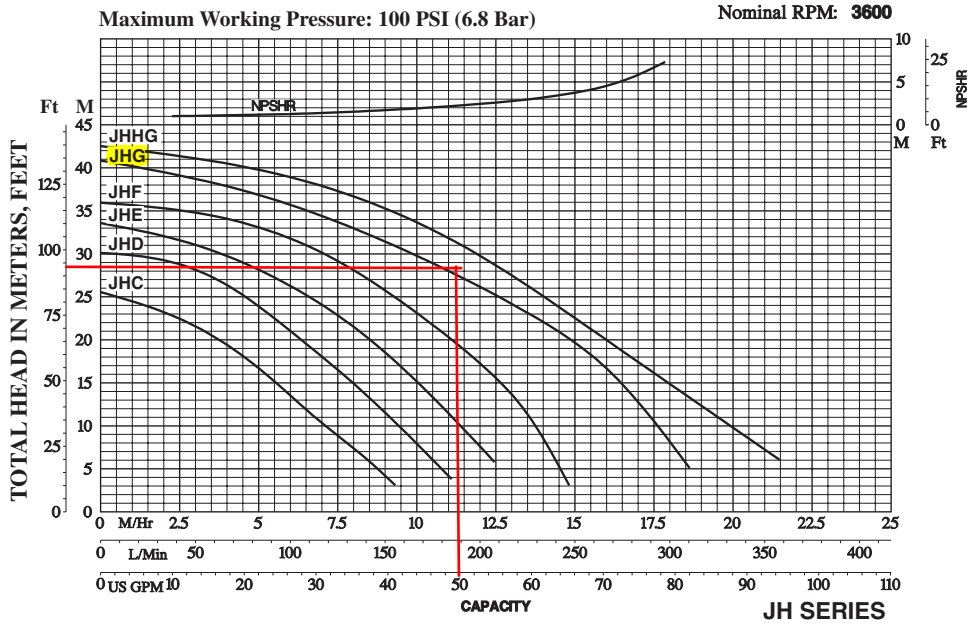
Catalog Number	HP	Pipe Tapping Sizes – NPT		Motor Voltage	Phase	Approx. Wt. Lbs. (Kg)
		Suct.	Disch.			
JHCX	1/2	1-1/4"	1"	115/230	1	39 (18)
JHC3X				208-230/460	3	39 (18)
JHDX	3/4	1-1/4"	1"	115/230	1	42 (19)
JHD3X				208-230/460	3	42 (19)
JHEX	1	1-1/4"	1"	115/230	1	45 (21)
JHE3X				208-230/460	3	45 (21)
JHFX	1-1/2	1-1/4"	1"	115/230	1	49 (22)
JHF3X				208-230/460	3	49 (22)
JHCX	2	2"	1-1/2"	115/230	1	69 (31)
JHG3X				208-230/460	3	69 (31)
JHHGX	2-1/2	2"	1-1/2"	115/230	1	74 (34)
JHHG3X				208-230/460	3	74 (34)

In order to provide the best products possible, specifications are subject to change.

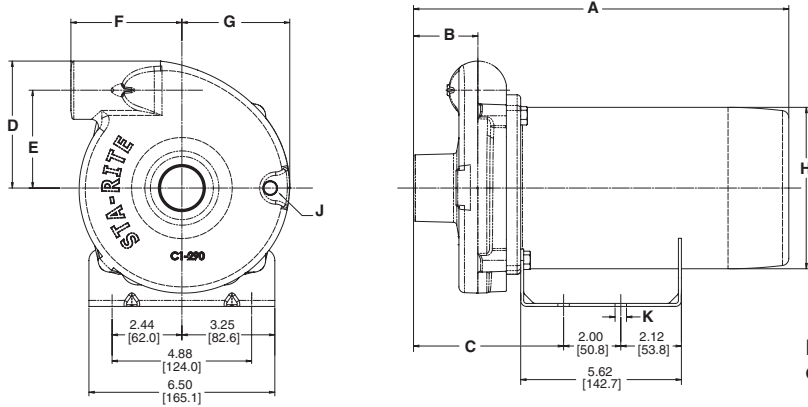


SAMNAN JH-Series Centrifugal

PUMP PERFORMANCE



OUTLINE DIMENSIONS



Dimensions (in inches) are for estimating purposes only.

DIMENSIONS (In Inches)

HP	NPT Suct.	NPT Disch.	A (1 Phase)	A (3 Phase)	B	C	D	E	F	G	H	NPT J	K
1/2	1-1/4	1	11-21/32	13-3/8	2-1/16	5-9/16	4-1/2	3-7/16	3-7/8	3-15/16	5-5/8	1/4	3/8 Dia.
3/4	1-1/4	1	11-25/32	13-3/8	2-1/16	5-9/16	4-1/2	3-7/16	3-7/8	3-15/16	5-5/8	1/4	3/8 Dia.
1	1-1/4	1	12-25/32	13-7/8	2-1/16	5-9/16	4-1/2	3-7/16	3-7/8	3-15/16	5-5/8	1/4	3/8 Dia.
1-1/2	1-1/4	1	13-39/64	14-3/8	2-1/16	5-9/16	4-1/2	3-7/16	3-7/8	3-15/16	5-5/8	1/4	3/8 Dia.
2	2	1-1/2	16-3/4	16-15/16	2-13/16	6-5/16	4-27/32	3-13/32	4-5/8	4	6-7/16	1/4	3/8 Dia.
2-1/2	2	1-1/2	17-3/4	17-1/4	2-13/16	6-5/16	4-27/32	3-13/32	4-5/8	4	6-7/16	1/4	3/8 Dia.

